

## CDK9 antibody [N3C3]

Cat. No. GTX107758

<b>Host</b>	Rabbit
<b>Clonality</b>	Polyclonal
<b>Isotype</b>	IgG
<b>Applications</b>	WB, ICC/IF, IHC-P
<b>Reactivity</b>	Human, Mouse, Rat

References ( 1 )

Package

100 µl, 25 µl

## Applications

## Application Note

\*Optimal dilutions/concentrations should be determined by the researcher.

Suggested dilution	Recommended dilution
WB	1:500-1:3000
ICC/IF	1:100-1:1000
IHC-P	1:100-1:1000

Not tested in other applications.

Calculated MW 43 kDa. ( [Note](#) )

## Properties

<b>Form</b>	Liquid
<b>Buffer</b>	PBS, 1% BSA, 20% Glycerol
<b>Preservative</b>	0.01% Thimerosal
<b>Storage</b>	Store as concentrated solution. Centrifuge briefly prior to opening vial. For short-term storage (1-2 weeks), store at 4°C. For long-term storage, aliquot and store at -20°C or below. Avoid multiple freeze-thaw cycles.
<b>Concentration</b>	1 mg/ml (Please refer to the vial label for the specific concentration.)
<b>Immunogen</b>	Recombinant protein encompassing a sequence within the center region of human CDK9. The exact sequence is proprietary.
<b>Purification</b>	Purified by antigen-affinity chromatography.
<b>Conjugation</b>	Unconjugated

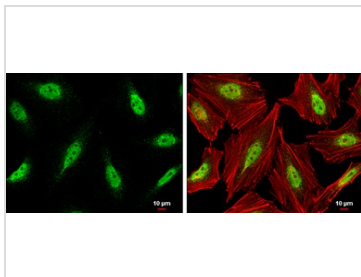
## Note

For laboratory research use only. Not for any clinical, therapeutic, or diagnostic use in humans or animals. Not for animal or human consumption.

Purchasers shall not, and agree not to enable third parties to, analyze, copy, reverse engineer or otherwise attempt to determine the structure or sequence of the product.

For full product information, images and publications, please visit our [website](#).

## DATA IMAGES



### GTX107758 ICC/IF Image

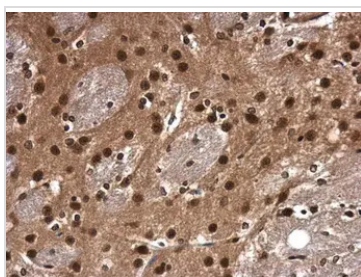
CDK9 antibody [N3C3] detects CDK9 protein at nucleus by immunofluorescent analysis.

Sample: HeLa cells were fixed in 4% paraformaldehyde at RT for 15 min.

Green: CDK9 protein stained by CDK9 antibody [N3C3] (GTX107758) diluted at 1:500.

Red: phalloidin, a cytoskeleton marker, diluted at 1:200.

Scale bar = 10 μm.



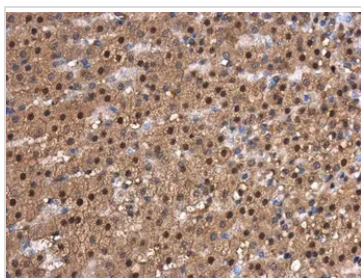
### GTX107758 IHC-P Image

CDK9 antibody [N3C3] detects CDK9 protein at cytoplasm and nucleus in mouse brain by immunohistochemical analysis.

Sample: Paraffin-embedded mouse brain.

CDK9 antibody [N3C3] (GTX107758) diluted at 1:500.

Antigen Retrieval: Citrate buffer, pH 6.0, 15 min



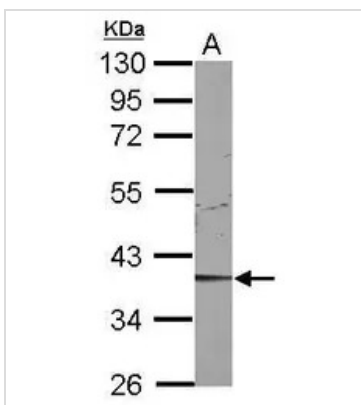
### GTX107758 IHC-P Image

CDK9 antibody [N3C3] detects CDK9 protein at cytoplasm and nucleus in rat adrenal gland by immunohistochemical analysis.

Sample: Paraffin-embedded rat adrenal gland.

CDK9 antibody [N3C3] (GTX107758) diluted at 1:500.

Antigen Retrieval: Citrate buffer, pH 6.0, 15 min



### GTX107758 WB Image

Sample (30 ug of whole cell lysate)

A: NIH-3T3

10% SDS PAGE

GTX107758 diluted at 1:1000



For full product information, images and publications, please visit our [website](https://www.genetex.com).