

## Activin Receptor Type IA antibody

**Cat. No. GTX107815**

|                     |            |
|---------------------|------------|
| <b>Host</b>         | Rabbit     |
| <b>Clonality</b>    | Polyclonal |
| <b>Isotype</b>      | IgG        |
| <b>Applications</b> | WB, IHC-Fr |
| <b>Reactivity</b>   | Mouse, Rat |

References ( 1 )

Package

100 µl, 25 µl

## Applications

**Application Note**

\*Optimal dilutions/concentrations should be determined by the researcher.

| Suggested dilution | Recommended dilution |
|--------------------|----------------------|
| WB                 | 1:500-1:3000         |
| IHC-Fr             | 1:100-1:1000         |

Not tested in other applications.

**Calculated MW** 57 kDa. ( [Note](#) )

## Properties

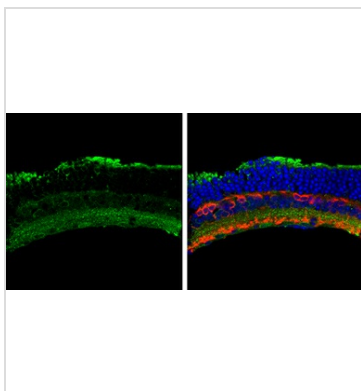
|                      |  |
|----------------------|--|
| <b>Form</b>          | Liquid   |
| <b>Buffer</b>        | PBS, 1% BSA, 20% Glycerol  |
| <b>Preservative</b>  | 0.01% Thimerosal   |
| <b>Storage</b>       | Store as concentrated solution. Centrifuge briefly prior to opening vial. For short-term storage (1-2 weeks), store at 4°C. For long-term storage, aliquot and store at -20°C or below. Avoid multiple freeze-thaw cycles. |
| <b>Concentration</b> | 0.9 mg/ml (Please refer to the vial label for the specific concentration.)   |
| <b>Immunogen</b>     | Recombinant protein encompassing a sequence within the Intracellular domain of human Activin A Receptor type I. The exact sequence is proprietary.   |
| <b>Purification</b>  | Purified by antigen-affinity chromatography.   |
| <b>Conjugation</b>   | Unconjugated   |

**Note**

For laboratory research use only. Not for any clinical, therapeutic, or diagnostic use in humans or animals. Not for animal or human consumption.

Purchasers shall not, and agree not to enable third parties to, analyze, copy, reverse engineer or otherwise attempt to determine the structure or sequence of the product.

For full product information, images and publications, please visit our [website](#).

**DATA IMAGES**

**GTX107815 IHC-Fr Image**

Activin A Receptor type I antibody detects Activin A Receptor type I protein by immunohistochemical analysis.

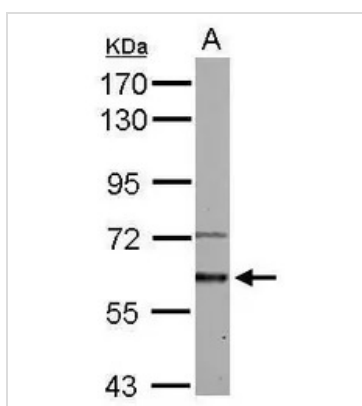
Sample: Frozen sectioned adult mouse retina.

Green: Activin A Receptor type I protein stained by Activin A Receptor type I antibody (GTX107815) diluted at 1:250.

Red: Protein kinase C alpha staining.

Blue: Fluoroshield with DAPI (GTX30920).

Antigen Retrieval: Trilogy™ (EDTA based, pH 8.0) buffer, 15min

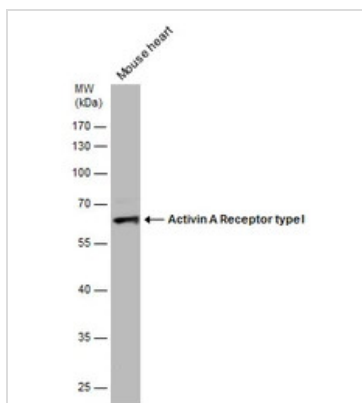

**GTX107815 WB Image**

Activin A Receptor type I antibody detects ACVR1 protein by Western blot analysis.

A. 50 µg rat liver lysate/extract

7.5 % SDS-PAGE

Activin A Receptor type I antibody (GTX107815) dilution: 1:1000


**GTX107815 WB Image**

Mouse tissue extract (50 µg) was separated by 10% SDS-PAGE, and the membrane was blotted with Activin A Receptor type I antibody (GTX107815) diluted at 1:500.



For full product information, images and publications, please visit our [website](https://www.genetex.com).