

## PDGF Receptor alpha antibody [N2C2], Internal

Cat. No. GTX107903

Host	Rabbit
Clonality	Polyclonal
Isotype	IgG
Applications	WB, ICC/IF
Reactivity	Human, Mouse, Rat

References ( 1 )

Package

100 µl, 25 µl

## Applications

## Application Note

\*Optimal dilutions/concentrations should be determined by the researcher.

Suggested dilution	Recommended dilution
WB	1:500-1:3000
ICC/IF	Assay dependent

Not tested in other applications.

Calculated MW 123 kDa. ( [Note](#) )

## Properties

Form	Liquid
Buffer	PBS, 20% Glycerol
Preservative	0.025% ProClin 300
Storage	Store as concentrated solution. Centrifuge briefly prior to opening vial. For short-term storage (1-2 weeks), store at 4°C. For long-term storage, aliquot and store at -20°C or below. Avoid multiple freeze-thaw cycles.
Concentration	1.39 mg/ml (Please refer to the vial label for the specific concentration.)
Immunogen	Recombinant protein encompassing a sequence within the center region of human PDGF Receptor alpha. The exact sequence is proprietary.
Purification	Purified by antigen-affinity chromatography.
Conjugation	Unconjugated

## Note

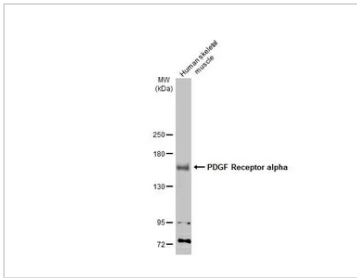
For laboratory research use only. Not for any clinical, therapeutic, or diagnostic use in humans or animals. Not for animal or human consumption.

Purchasers shall not, and agree not to enable third parties to, analyze, copy, reverse engineer or otherwise attempt to determine the structure or sequence of the product.



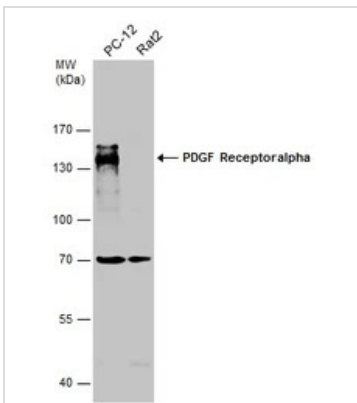
For full product information, images and publications, please visit our [website](#).

## DATA IMAGES



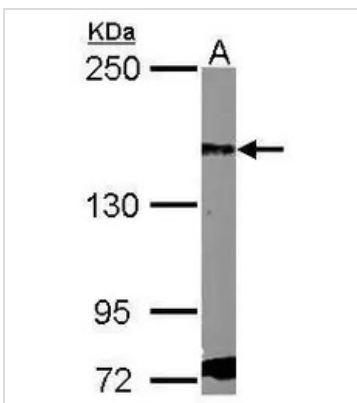
### GTx107903 WB Image

Human tissue extract (30 µg) was separated by 5% SDS-PAGE, and the membrane was blotted with PDGF Receptor alpha antibody [N2C2], Internal (GTx107903) diluted at 1:1000. The HRP-conjugated anti-rabbit IgG antibody (GTx213110-01) was used to detect the primary antibody, and the signal was developed with Trident ECL plus-Enhanced.



### GTx107903 WB Image

Various whole cell extracts (30 µg) were separated by 7.5% SDS-PAGE, and the membrane was blotted with PDGF Receptor alpha antibody [N2C2], Internal (GTx107903) diluted at 1:500.



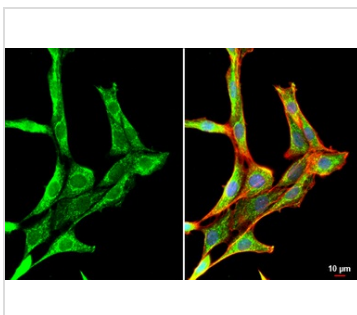
### GTx107903 WB Image

Sample (30 ug of whole cell lysate)

A: K562

5% SDS PAGE

GTx107903 diluted at 1:1000



### GTx107903 ICC/IF Image

PDGF Receptor alpha antibody [N2C2], Internal detects PDGF Receptor alpha protein at cytoplasm by immunofluorescent analysis.

Sample: NIH/3T3 cells were fixed in 4% paraformaldehyde at RT for 15 min.

Green: PDGF Receptor alpha stained by PDGF Receptor alpha antibody [N2C2], Internal (GTx107903) diluted at 1:500.

Red: phalloidin, a cytoskeleton marker diluted at 1:200.

Blue: Hoechst 33342 staining.



For full product information, images and publications, please visit our [website](https://www.genetex.com).