

## Nucleoporin p62 antibody

Cat. No. GTX107920

Host	Rabbit
Clonality	Polyclonal
Isotype	IgG
Applications	WB
Reactivity	Human, Mouse, Rat

Package  
100 µl, 25 µl

## Applications

## Application Note

\*Optimal dilutions/concentrations should be determined by the researcher.

Suggested dilution	Recommended dilution
WB	1:5000-1:20000

Not tested in other applications.

Calculated MW 53 kDa. ( [Note](#) )

## Properties

Form	Liquid
Buffer	0.1M Tris, 0.1M Glycine, 10% Glycerol
Preservative	0.01% Thimerosal
Storage	Store as concentrated solution. Centrifuge briefly prior to opening vial. For short-term storage (1-2 weeks), store at 4°C. For long-term storage, aliquot and store at -20°C or below. Avoid multiple freeze-thaw cycles.
Concentration	0.86 mg/ml (Please refer to the vial label for the specific concentration.)
Immunogen	Recombinant protein encompassing a sequence within the center region of human Nucleoporin p62. The exact sequence is proprietary.
Purification	Purified by antigen-affinity chromatography.
Conjugation	Unconjugated

## Note

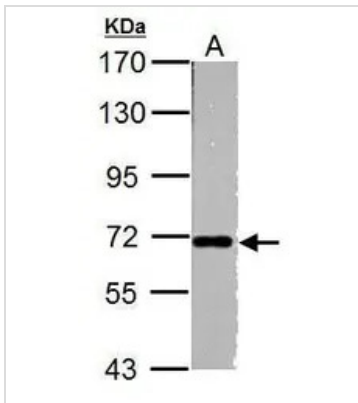
For laboratory research use only. Not for any clinical, therapeutic, or diagnostic use in humans or animals. Not for animal or human consumption.

Purchasers shall not, and agree not to enable third parties to, analyze, copy, reverse engineer or otherwise attempt to determine the structure or sequence of the product.



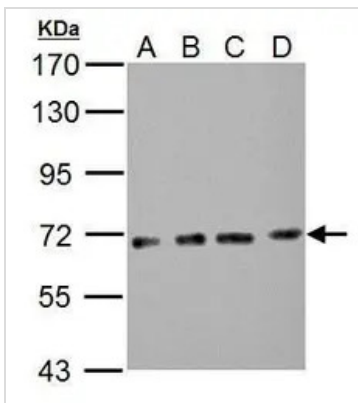
For full product information, images and publications, please visit our [website](#).

## DATA IMAGES



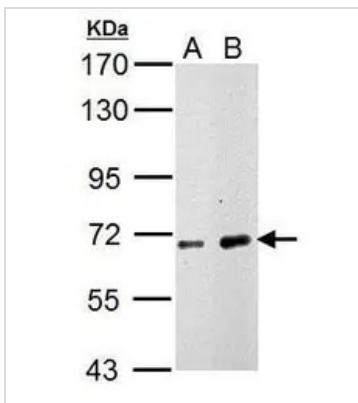
### GTX107920 WB Image

Sample (30 ug of whole cell lysate)  
A: PC-12  
7.5% SDS PAGE  
GTX107920 diluted at 1:5000



### GTX107920 WB Image

Sample (30 ug of whole cell lysate)  
A: NIH-3T3  
B: JC  
C: BCL-1  
D: C2C12  
7.5% SDS PAGE  
GTX107920 diluted at 1:5000



### GTX107920 WB Image

Sample (30 ug of whole cell lysate)  
A: A431  
B: A375  
7.5% SDS PAGE  
GTX107920 diluted at 1:10000



For full product information, images and publications, please visit our [website](https://www.genetex.com).