

Importin 13 antibody [C3], C-term

Cat. No. GTX107982

| | |
|--------------|---------------|
| Host | Rabbit |
| Clonality | Polyclonal |
| Isotype | IgG |
| Applications | WB, IHC-P, IP |
| Reactivity | Human, Rat |

Package
100 µl, 25 µl

Applications

Application Note

*Optimal dilutions/concentrations should be determined by the researcher.

| Suggested dilution | Recommended dilution |
|--------------------|----------------------|
| WB | 1:500-1:3000 |
| IHC-P | 1:100-1:1000 |
| IP | 1:100-1:500 |

Not tested in other applications.

Calculated MW 108 kDa. ([Note](#))

Properties

| | |
|---------------|--|
| Form | Liquid |
| Buffer | 0.1M Tris, 0.1M Glycine, 10% Glycerol |
| Preservative | 0.01% Thimerosal |
| Storage | Store as concentrated solution. Centrifuge briefly prior to opening vial. For short-term storage (1-2 weeks), store at 4°C. For long-term storage, aliquot and store at -20°C or below. Avoid multiple freeze-thaw cycles. |
| Concentration | 1.02 mg/ml (Please refer to the vial label for the specific concentration.) |
| Immunogen | Carrier-protein conjugated synthetic peptide encompassing a sequence within the C-terminus region of human Importin 13. The exact sequence is proprietary. |
| Purification | Purified by antigen-affinity chromatography. |
| Conjugation | Unconjugated |

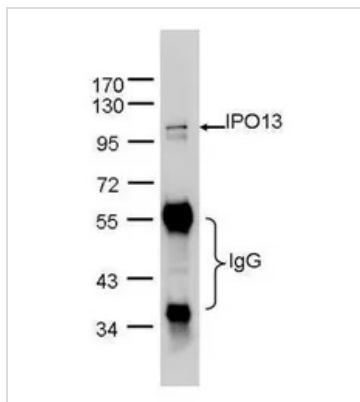
Note

For laboratory research use only. Not for any clinical, therapeutic, or diagnostic use in humans or animals. Not for animal or human consumption.

Purchasers shall not, and agree not to enable third parties to, analyze, copy, reverse engineer or otherwise attempt to determine the structure or sequence of the product.

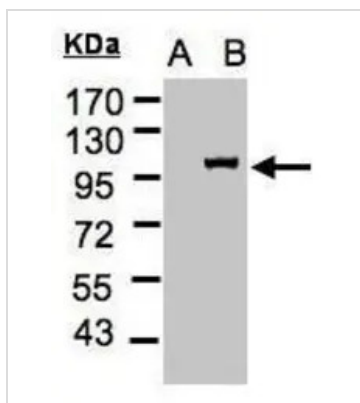


For full product information, images and publications, please visit our [website](#).

DATA IMAGES

GTX107982 IP Image

IPO13 was immunoprecipitated from 1mg of Hela whole cell lysate using 10 ug of anti-IPO13 antibody (GTX107982).

The precipitated IPO13 was detected by GTX107982 diluted at 1:1000.


GTX107982 WB Image

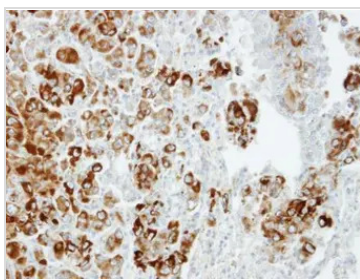
Western Blot analysis of IPO13 expression in transfected 293T cell line by IPO13 polyclonal antibody.

A: Non-transfected lysate.

B: IPO13 transfected lysate.

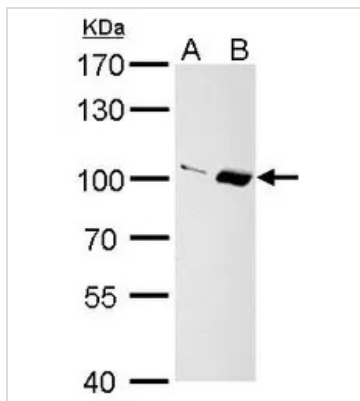
7.5% SDS PAGE

GTX107982 diluted at 1:500


GTX107982 IHC-P Image

Immunohistochemical analysis of paraffin-embedded CL1-5 xenograft, using Importin 13(GTX107982) antibody at 1:100 dilution.

Antigen Retrieval: Trilogy™ (EDTA based, pH 8.0) buffer, 15min


GTX107982 WB Image

Importin 13 antibody [C3], C-term detects Importin 13 protein by Western blot analysis.

A. 30 µg PC-12 whole cell lysate/extract

B. 30 µg Rat2 whole cell lysate/extract

7.5 % SDS-PAGE

Importin 13 antibody [C3], C-term (GTX107982) dilution: 1:1000



For full product information, images and publications, please visit our [website](https://www.genetex.com).