

## GCIP interacting protein p29 antibody [C2C3], C-term

**Cat. No. GTX107998**

<b>Host</b>	Rabbit
<b>Clonality</b>	Polyclonal
<b>Isotype</b>	IgG
<b>Applications</b>	WB
<b>Reactivity</b>	Human

**Package**  
100 µl, 25 µl

## Applications

**Application Note**

\*Optimal dilutions/concentrations should be determined by the researcher.

Suggested dilution	Recommended dilution
--------------------	----------------------

WB	1:500-1:3000
----	--------------

Not tested in other applications.

<b>Calculated MW</b>	29 kDa. ( <a href="#">Note</a> )
----------------------	----------------------------------

## Properties

<b>Form</b>	Liquid
-------------	--------

<b>Buffer</b>	0.1M Tris, 0.1M Glycine, 10% Glycerol
---------------	---------------------------------------

<b>Preservative</b>	0.01% Thimerosal
---------------------	------------------

<b>Storage</b>	Store as concentrated solution. Centrifuge briefly prior to opening vial. For short-term storage (1-2 weeks), store at 4°C. For long-term storage, aliquot and store at -20°C or below. Avoid multiple freeze-thaw cycles.
----------------	--

<b>Concentration</b>	0.71 mg/ml (Please refer to the vial label for the specific concentration.)
----------------------	---

<b>Immunogen</b>	Carrier-protein conjugated synthetic peptide encompassing a sequence within the C-terminus region of human GCIP interacting protein p29. The exact sequence is proprietary.
------------------	---

<b>Purification</b>	Purified by antigen-affinity chromatography.
---------------------	--

<b>Conjugation</b>	Unconjugated
--------------------	--------------

**Note**

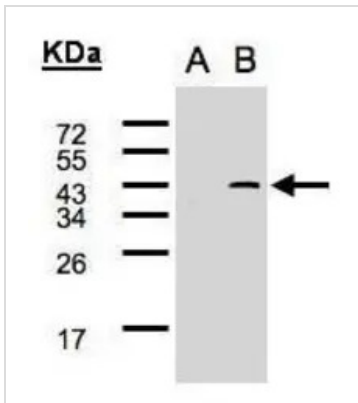
For laboratory research use only. Not for any clinical, therapeutic, or diagnostic use in humans or animals. Not for animal or human consumption.

Purchasers shall not, and agree not to enable third parties to, analyze, copy, reverse engineer or otherwise attempt to determine the structure or sequence of the product.



For full product information, images and publications, please visit our [website](#).

## DATA IMAGES

**GTX107998 WB Image**

Western Blot analysis of SYF2 expression in transfected 293T cell line by SYF2 polyclonal antibody.

A: Non-transfected lysate.

B: SYF2 transfected lysate.

12% SDS PAGE

GTX107998 diluted at 1:500



For full product information, images and publications, please visit our [website](#).