

# Protease Inhibitor 15 antibody [C2C3], C-term

**Cat. No. GTX108006**

<b>Host</b>	Rabbit
<b>Clonality</b>	Polyclonal
<b>Isotype</b>	IgG
<b>Applications</b>	WB, ICC/IF, IHC-P
<b>Reactivity</b>	Human

**Package**  
100 µl, 25 µl

## Applications

### Application Note

\*Optimal dilutions/concentrations should be determined by the researcher.

Suggested dilution	Recommended dilution
WB	1:500-1:3000
ICC/IF	1:100-1:1000
IHC-P	1:100-1:1000

Not tested in other applications.

**Calculated MW** 29 kDa. ( [Note](#) )

## Properties

<b>Form</b>	Liquid
<b>Buffer</b>	0.1M Tris, 0.1M Glycine, 20% Glycerol
<b>Preservative</b>	0.01% Thimerosal
<b>Storage</b>	Store as concentrated solution. Centrifuge briefly prior to opening vial. For short-term storage (1-2 weeks), store at 4°C. For long-term storage, aliquot and store at -20°C or below. Avoid multiple freeze-thaw cycles.
<b>Concentration</b>	0.6 mg/ml (Please refer to the vial label for the specific concentration.)
<b>Immunogen</b>	Carrier-protein conjugated synthetic peptide encompassing a sequence within the C-terminus region of human Protease Inhibitor 15. The exact sequence is proprietary.
<b>Purification</b>	Purified by antigen-affinity chromatography.
<b>Conjugation</b>	Unconjugated

### Note

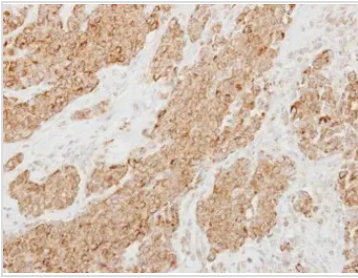
For laboratory research use only. Not for any clinical, therapeutic, or diagnostic use in humans or animals. Not for animal or human consumption.

Purchasers shall not, and agree not to enable third parties to, analyze, copy, reverse engineer or otherwise attempt to determine the structure or sequence of the product.



For full product information, images and publications, please visit our [website](#).

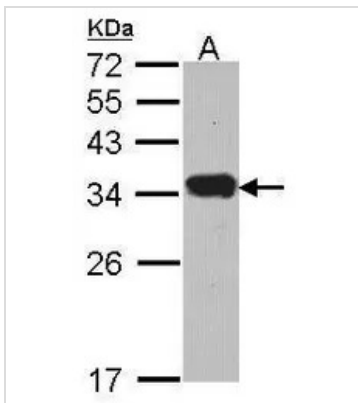
## DATA IMAGES



### GTx108006 IHC-P Image

Immunohistochemical analysis of paraffin-embedded human breast cancer, using Protease Inhibitor 15(GTx108006) antibody at 1:250 dilution.

Antigen Retrieval: Trilogy™ (EDTA based, pH 8.0) buffer, 15min



### GTx108006 WB Image

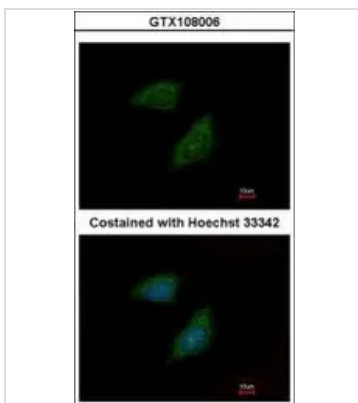
Sample (30 ug of whole cell lysate)

A: Hela

12% SDS PAGE

Protease Inhibitor 15 antibody

GTx108006 diluted at 1:1000



### GTx108006 ICC/IF Image

Immunofluorescence analysis of methanol-fixed HeLa, using Protease Inhibitor 15(GTx108006) antibody at 1:500 dilution.



For full product information, images and publications, please visit our [website](https://www.genetex.com).