

## GPR52 antibody

Cat. No. GTX108123

<b>Host</b>	Rabbit
<b>Clonality</b>	Polyclonal
<b>Isotype</b>	IgG
<b>Applications</b>	WB, IHC-P
<b>Reactivity</b>	Human, Mouse, Rat

References ( 2 )

Package

100 µl, 25 µl

## Applications

## Application Note

\*Optimal dilutions/concentrations should be determined by the researcher.

Suggested dilution	Recommended dilution
WB	1:500-1:3000
IHC-P	1:100-1:1000

**Note : As is commonly seen with membrane proteins, significant hydrophobicity can lead to aggregation following boiling of samples prior to SDS-PAGE and subsequent western blotting. We recommend to avoid boiling in this case.**

Not tested in other applications.

<b>Calculated MW</b>	41 kDa. ( <a href="#">Note</a> )
<b>Product Note</b>	KO/KD validation is based on published data (PMID: 25738228).

## Properties

<b>Form</b>	Liquid
<b>Buffer</b>	0.1M Tris, 0.1M Glycine, 10% Glycerol
<b>Preservative</b>	0.01% Thimerosal
<b>Storage</b>	Store as concentrated solution. Centrifuge briefly prior to opening vial. For short-term storage (1-2 weeks), store at 4°C. For long-term storage, aliquot and store at -20°C or below. Avoid multiple freeze-thaw cycles.
<b>Concentration</b>	1.02 mg/ml (Please refer to the vial label for the specific concentration.)
<b>Immunogen</b>	Synthetic peptide encompassing a sequence within the Extracellular domain of human GPR52. The exact sequence is proprietary.
<b>Purification</b>	Purified by antigen-affinity chromatography.
<b>Conjugation</b>	Unconjugated



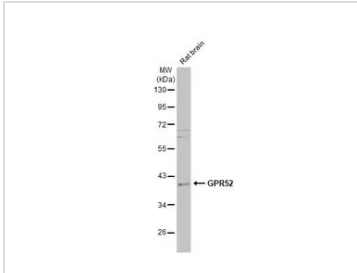
For full product information, images and publications, please visit our [website](#).

For laboratory research use only. Not for any clinical, therapeutic, or diagnostic use in humans or animals. Not for animal or human consumption.

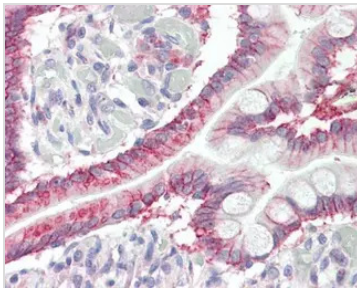
**Note**

Purchasers shall not, and agree not to enable third parties to, analyze, copy, reverse engineer or otherwise attempt to determine the structure or sequence of the product.

## DATA IMAGES

**GTX108123 WB Image**

Rat tissue extract (50 µg) was separated by 10% SDS-PAGE, and the membrane was blotted with GPR52 antibody (GTX108123) diluted at 1:500. The HRP-conjugated anti-rabbit IgG antibody (GTX213110-01) was used to detect the primary antibody, and the signal was developed with Trident ECL plus-Enhanced.

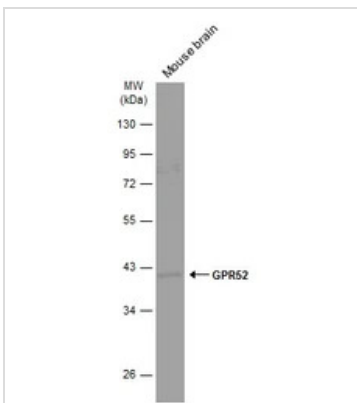
**GTX108123 IHC-P Image**

GPR52 antibody detects GPR52 protein at membrane on human small intestine by immunohistochemical analysis.

Sample: Paraffin-embedded small intestine.

GPR52 antibody (GTX108123) dilution: 1:100.

Antigen Retrieval: Citrate buffer, pH 6.0, 15 min

**GTX108123 WB Image**

Mouse tissue extract (50 µg) was separated by 10% SDS-PAGE, and the membrane was blotted with GPR52 antibody (GTX108123) diluted at 1:500. The HRP-conjugated anti-rabbit IgG antibody (GTX213110-01) was used to detect the primary antibody.



For full product information, images and publications, please visit our [website](#).