

ROR alpha antibody [C3], C-term

Cat. No. GTX108201

Host	Rabbit
Clonality	Polyclonal
Isotype	IgG
Applications	WB, ICC/IF
Reactivity	Human, Mouse

Package
100 µl, 25 µl

Applications

Application Note

*Optimal dilutions/concentrations should be determined by the researcher.

Suggested dilution	Recommended dilution
WB	1:500-1:3000
ICC/IF	1:100-1:1000

Not tested in other applications.

Calculated MW 63 kDa. ([Note](#))

Properties

Form	Liquid
Buffer	0.1M Tris, 0.1M Glycine, 10% Glycerol
Preservative	0.01% Thimerosal
Storage	Store as concentrated solution. Centrifuge briefly prior to opening vial. For short-term storage (1-2 weeks), store at 4°C. For long-term storage, aliquot and store at -20°C or below. Avoid multiple freeze-thaw cycles.
Concentration	1 mg/ml (Please refer to the vial label for the specific concentration.)
Immunogen	Carrier-protein conjugated synthetic peptide encompassing a sequence within the C-terminus region of human ROR alpha. The exact sequence is proprietary.
Purification	Purified by antigen-affinity chromatography.
Conjugation	Unconjugated

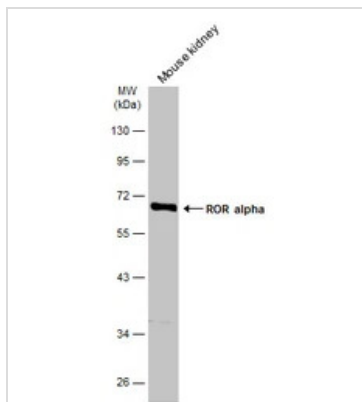
Note

For laboratory research use only. Not for any clinical, therapeutic, or diagnostic use in humans or animals. Not for animal or human consumption.

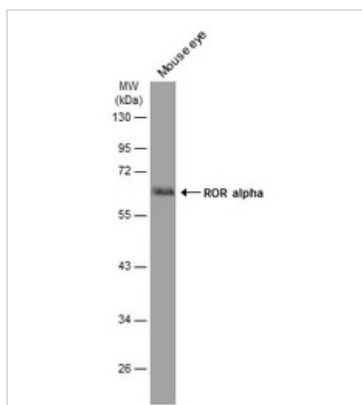
Purchasers shall not, and agree not to enable third parties to, analyze, copy, reverse engineer or otherwise attempt to determine the structure or sequence of the product.



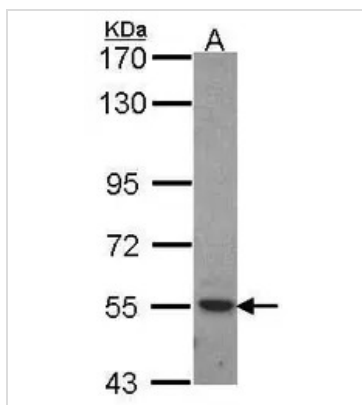
For full product information, images and publications, please visit our [website](#).

DATA IMAGES

GTK108201 WB Image

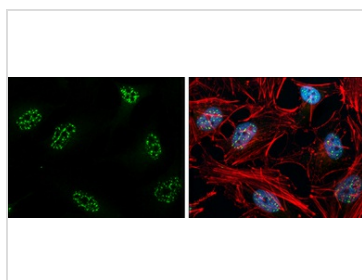
Mouse tissue extract (50 µg) was separated by 10% SDS-PAGE, and the membrane was blotted with ROR alpha antibody [C3], C-term (GTK108201) diluted at 1:1000. The HRP-conjugated anti-rabbit IgG antibody (GTK213110-01) was used to detect the primary antibody.


GTK108201 WB Image

Mouse tissue extract (50 µg) was separated by 10% SDS-PAGE, and the membrane was blotted with ROR alpha antibody [C3], C-term (GTK108201) diluted at 1:1000. The HRP-conjugated anti-rabbit IgG antibody (GTK213110-01) was used to detect the primary antibody.


GTK108201 WB Image

Sample (30 ug of whole cell lysate)
A: HeLa
7.5% SDS PAGE
ROR alpha antibody
GTK108201 diluted at 1:1000


GTK108201 ICC/IF Image

ROR alpha antibody [C3], C-term detects ROR alpha protein at nucleus by immunofluorescent analysis.
Sample: HeLa cells were fixed in 4% paraformaldehyde at RT for 15 min.
Green: ROR alpha stained by ROR alpha antibody [C3], C-term (GTK108201) diluted at 1:1000.
Red: phalloidin, a cytoskeleton marker, diluted at 1:100.
Blue: Hoechst 33342 staining.



For full product information, images and publications, please visit our [website](https://www.genetex.com).