

GALR1 antibody [C2C3], C-term

Cat. No. GTX108207

Host	Rabbit
Clonality	Polyclonal
Isotype	IgG
Applications	ICC/IF, IHC-P, IHC-Fr
Reactivity	Human, Mouse

References (7)

Package

100 µl, 25 µl

Applications

Application Note

*Optimal dilutions/concentrations should be determined by the researcher.

Suggested dilution	Recommended dilution
ICC/IF	Assay dependent
IHC-P	1:100-1:1000
IHC-Fr	Assay dependent

Not tested in other applications.

Properties

Form	Liquid
Buffer	0.1M Tris, 0.1M Glycine, 10% Glycerol
Preservative	0.01% Thimerosal
Storage	Store as concentrated solution. Centrifuge briefly prior to opening vial. For short-term storage (1-2 weeks), store at 4°C. For long-term storage, aliquot and store at -20°C or below. Avoid multiple freeze-thaw cycles.
Concentration	0.3 mg/ml (Please refer to the vial label for the specific concentration.)
Immunogen	Synthetic peptide encompassing a sequence within the Intracellular domain of human GALR1. The exact sequence is proprietary.
Purification	Purified by antigen-affinity chromatography.
Conjugation	Unconjugated

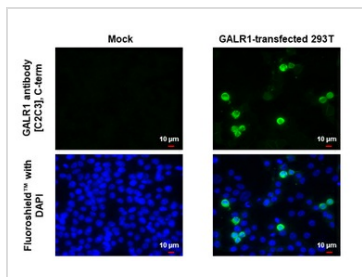
Note

For laboratory research use only. Not for any clinical, therapeutic, or diagnostic use in humans or animals. Not for animal or human consumption.

Purchasers shall not, and agree not to enable third parties to, analyze, copy, reverse engineer or otherwise attempt to determine the structure or sequence of the product.

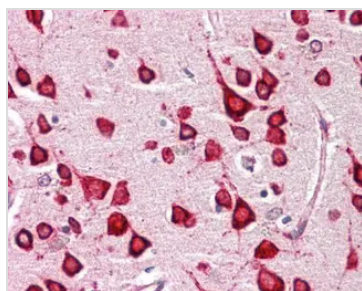
For full product information, images and publications, please visit our [website](#).

DATA IMAGES



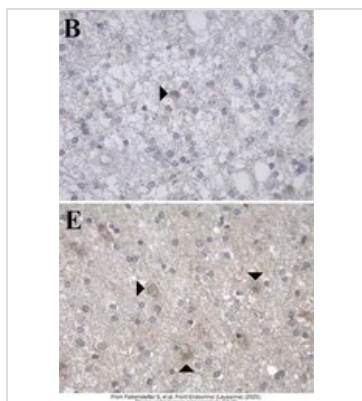
GTX108207 ICC/IF Image

GALR1 antibody [C2C3], C-term detects GALR1 protein by immunofluorescent analysis.
 Sample: Mock and transfected 293T cells were fixed in ice-cold MeOH for 5 min.
 Green: GALR1 stained by GALR1 antibody [C2C3], C-term (GTX108207) diluted at 1:500.
 Blue: Fluoroshield with DAPI (GTX30920).



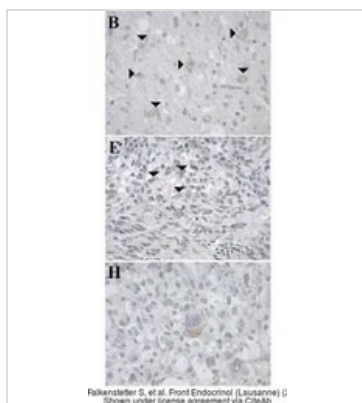
GTX108207 IHC-P Image

Galanin receptor 1 antibody [C2C3], C-term detects galanin receptor 1 protein at membrane on human small intestine by immunohistochemical analysis.
 Sample: Paraffin-embedded small intestine.
 galanin receptor 1 antibody [C2C3], C-term (GTX108207) dilutio
 Antigen Retrieval: Citrate buffer, pH 6.0, 15 min



GTX108207 IHC-P Image

The data was published in the journal Front Endocrinol (Lausanne) in 2020. [PMID: 32265844](https://pubmed.ncbi.nlm.nih.gov/32265844/)



GTX108207 IHC-P Image

The data was published in the journal Front Endocrinol (Lausanne) in 2020. [PMID: 32265844](https://pubmed.ncbi.nlm.nih.gov/32265844/)



For full product information, images and publications, please visit our [website](https://www.genetex.com).