

c-Myc antibody [9E10] (FITC)

Cat. No. GTX10826

Host	Mouse
Clonality	Monoclonal
Isotype	IgG1
Applications	FCM
Reactivity	Human

References (21)

Package

50 µg

Applications

Application Note

*Optimal dilutions/concentrations should be determined by the researcher.

Suggested dilution	Recommended dilution
FCM	Assay dependent

Not tested in other applications.

Product Note This antibody recognizes the sequence EQKLISEEDL.

Properties

Form	Liquid
Buffer	PBS
Preservative	15mM Sodium azide
Storage	Store as concentrated solution. Centrifuge briefly prior to opening vial. Store at 4°C. DO NOT FREEZE. Protect from light.
Concentration	1 mg/ml (Please refer to the vial label for the specific concentration.)
Immunogen	Synthetic peptide sequence (AEEQKLISEEDLL) corresponding to the C-terminal region of human c-Myc.
Purification	Purified by size-exclusion chromatography
Conjugation	Fluorescein isothiocyanate (FITC) Wavelength

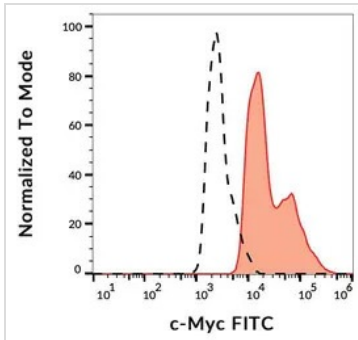
Note

For laboratory research use only. Not for any clinical, therapeutic, or diagnostic use in humans or animals. Not for animal or human consumption.

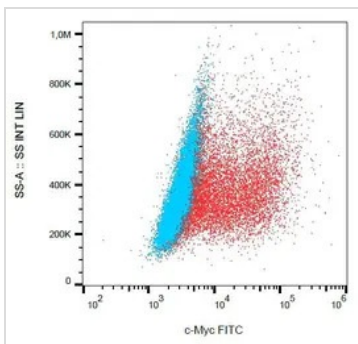
Purchasers shall not, and agree not to enable third parties to, analyze, copy, reverse engineer or otherwise attempt to determine the structure or sequence of the product.



For full product information, images and publications, please visit our [website](#).

DATA IMAGES

GTX10826 FCM Image

FACS (intracellular staining) analysis of transfected LST-1-c-Myc in HEK-293 cells compared with nontransfected HEK-293 cells using GTX10826 c-Myc antibody [9E10] (FITC).


GTX10826 FCM Image

FACS analysis of transfected LST-1-c-Myc in HEK-293 cells (red) compared with non-transfected HEK-293 cells (blue) using GTX10826 c-Myc antibody [9E10] (FITC).



For full product information, images and publications, please visit our [website](https://www.genetex.com).