

## COX6A2 antibody [N3C3]

Cat. No. GTX108261

Host	Rabbit
Clonality	Polyclonal
Isotype	IgG
Applications	WB, ICC/IF, IHC-P
Reactivity	Human, Mouse

Package  
100 µl, 25 µl

## Applications

## Application Note

\*Optimal dilutions/concentrations should be determined by the researcher.

Suggested dilution	Recommended dilution
WB	1:500-1:3000
ICC/IF	1:100-1:1000
IHC-P	1:100-1:1000

Not tested in other applications.

Calculated MW	11 kDa. ( <a href="#">Note</a> )
Product Note	Based on sequence homology, this antibody may cross react with COX6A1 protein.

## Properties

Form	Liquid
Buffer	0.1M Tris, 0.1M Glycine, 10% Glycerol
Preservative	0.01% Thimerosal
Storage	Store as concentrated solution. Centrifuge briefly prior to opening vial. For short-term storage (1-2 weeks), store at 4°C. For long-term storage, aliquot and store at -20°C or below. Avoid multiple freeze-thaw cycles.
Concentration	0.9 mg/ml (Please refer to the vial label for the specific concentration.)
Immunogen	Carrier-protein conjugated synthetic peptide encompassing a sequence within the C-terminus region of human COX6A2. The exact sequence is proprietary.
Purification	Purified by antigen-affinity chromatography.
Conjugation	Unconjugated



For full product information, images and publications, please visit our [website](#).

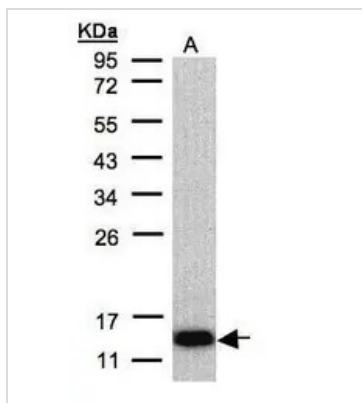
Date 2026 / 01 / 11 Page 1 of 2

For laboratory research use only. Not for any clinical, therapeutic, or diagnostic use in humans or animals. Not for animal or human consumption.

## Note

Purchasers shall not, and agree not to enable third parties to, analyze, copy, reverse engineer or otherwise attempt to determine the structure or sequence of the product.

## DATA IMAGES



### GTx108261 WB Image

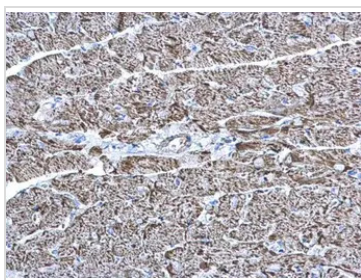
Sample(30 µg of whole cell lysate)

A:Raji(GTX27908)

12% SDS PAGE

GTx108261 diluted at 1:500

The HRP-conjugated anti-rabbit IgG antibody (GTx213110-01) was used to detect the primary antibody.



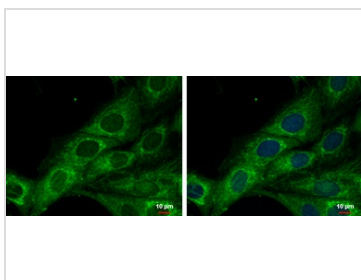
### GTx108261 IHC-P Image

COX6A2 antibody [N3C3] detects COX6A2 protein at mitochondria on mouse heart by immunohistochemical analysis.

Sample: Paraffin-embedded mouse heart.

COX6A2 antibody [N3C3] (GTx108261) diluted at 1:500.

Antigen Retrieval: Trilogy™ (EDTA based, pH 8.0) buffer, 15min



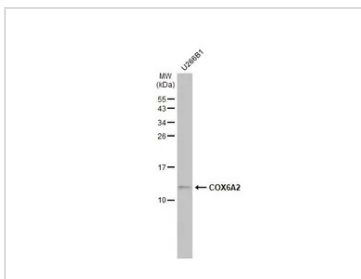
### GTx108261 ICC/IF Image

COX6A2 antibody [N3C3] detects COX6A2 protein at mitochondria by immunofluorescent analysis.

Sample: SK-N-SH cells were fixed in 2% paraformaldehyde/culture medium at 37°C for 30 min.

Green: COX6A2 protein stained by COX6A2 antibody [N3C3] (GTx108261) diluted at 1:500.

Blue: Hoechst 33342 staining.



### GTx108261 WB Image

Whole cell extract (30 µg) was separated by 15% SDS-PAGE, and the membrane was blotted with COX6A2 antibody [N3C3] (GTx108261) diluted at 1:1000. The HRP-conjugated anti-rabbit IgG antibody (GTx213110-01) was used to detect the primary antibody.



For full product information, images and publications, please visit our [website](https://www.genetex.com).