

Histone H2A.Z antibody

Cat. No. GTX108273

Host	Rabbit
Clonality	Polyclonal
Isotype	IgG
Applications	WB, ICC/IF, IHC-P, IHC-Wm, IP, ChIP assay
Reactivity	Human, Mouse, Zebrafish, Cat, Dog

References (1)

Package

100 µl, 25 µl

Applications

Application Note

*Optimal dilutions/concentrations should be determined by the researcher.

Suggested dilution	Recommended dilution
WB	1:500-1:3000
ICC/IF	1:100-1:1000
IHC-P	1:100-1:1000
IHC-Wm	Assay dependent
IP	1:500-1:1000
ChIP assay	Assay dependent

Not tested in other applications.

Calculated MW 14 kDa. ([Note](#))

Properties

Form	Liquid
Buffer	0.1M Tris, 0.1M Glycine, 10% Glycerol
Preservative	0.01% Thimerosal
Storage	Store as concentrated solution. Centrifuge briefly prior to opening vial. For short-term storage (1-2 weeks), store at 4°C. For long-term storage, aliquot and store at -20°C or below. Avoid multiple freeze-thaw cycles.
Concentration	1 mg/ml (Please refer to the vial label for the specific concentration.)
Immunogen	Carrier-protein conjugated synthetic peptide encompassing a sequence within the C-terminus region of human Histone H2A.Z. The exact sequence is proprietary.
Purification	Purified by antigen-affinity chromatography.
Conjugation	Unconjugated

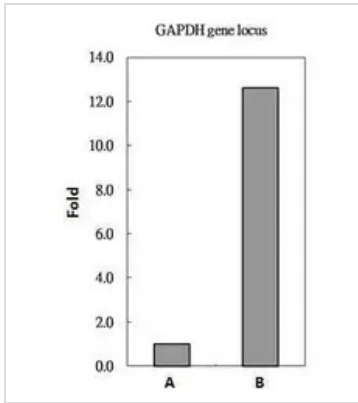


For full product information, images and publications, please visit our [website](#).

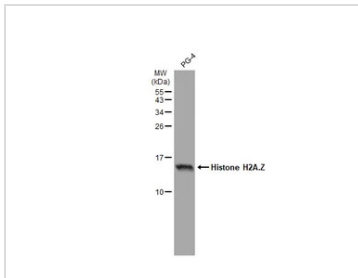
For laboratory research use only. Not for any clinical, therapeutic, or diagnostic use in humans or animals. Not for animal or human consumption.

Note

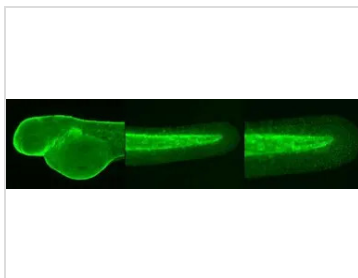
Purchasers shall not, and agree not to enable third parties to, analyze, copy, reverse engineer or otherwise attempt to determine the structure or sequence of the product.

DATA IMAGES

GTX108273 ChIP assay Image

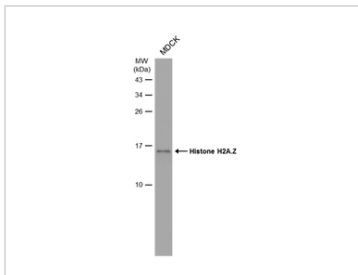
Histone H2A.Z antibody immunoprecipitates Histone H2A.Z protein-DNA in ChIP experiments. ChIP Sample: HeLa whole cell lysate/extract A. 5 µg preimmune rabbit IgG B. 5 µg of Histone H2A.Z antibody (GTX108273) The precipitated DNA was detected by PCR with primer set targeting to GAPDH gene locus.


GTX108273 WB Image

Whole cell extract (30 µg) was separated by 15% SDS-PAGE, and the membrane was blotted with Histone H2A.Z antibody (GTX108273) diluted at 1:3000. The HRP-conjugated anti-rabbit IgG antibody (GTX213110-01) was used to detect the primary antibody.


GTX108273 IHC-Wm Image

Immunohistochemical analysis (whole mount) of zebrafish embryo, using Histone H2A.Z antibody (GTX108273) at 1:200 dilution.


GTX108273 WB Image

Whole cell extract (30 µg) was separated by 15% SDS-PAGE, and the membrane was blotted with Histone H2A.Z antibody (GTX108273) diluted at 1:3000. The HRP-conjugated anti-rabbit IgG antibody (GTX213110-01) was used to detect the primary antibody.



For full product information, images and publications, please visit our [website](https://www.genetex.com).