

Thrombomodulin antibody [C3], C-term

Cat. No. GTX108277

Host	Rabbit
Clonality	Polyclonal
Isotype	IgG
Applications	WB, ICC/IF, IHC-P, IP
Reactivity	Human

Package
100 µl, 25 µl

Applications

Application Note

*Optimal dilutions/concentrations should be determined by the researcher.

Suggested dilution	Recommended dilution
WB	1:500-1:3000
ICC/IF	1:100-1:1000
IHC-P	1:100-1:1000
IP	1:100-1:500

Not tested in other applications.

Calculated MW 60 kDa. ([Note](#))

Properties

Form	Liquid
Buffer	PBS, 20% Glycerol
Preservative	0.025% ProClin 300
Storage	Store as concentrated solution. Centrifuge briefly prior to opening vial. For short-term storage (1-2 weeks), store at 4°C. For long-term storage, aliquot and store at -20°C or below. Avoid multiple freeze-thaw cycles.
Concentration	1 mg/ml (Please refer to the vial label for the specific concentration.)
Immunogen	Synthetic peptide encompassing a sequence within the Intracellular domain of human Thrombomodulin. The exact sequence is proprietary.
Purification	Purified by antigen-affinity chromatography.
Conjugation	Unconjugated

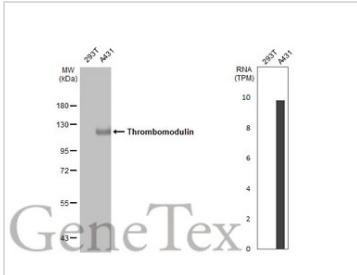


For full product information, images and publications, please visit our [website](#).

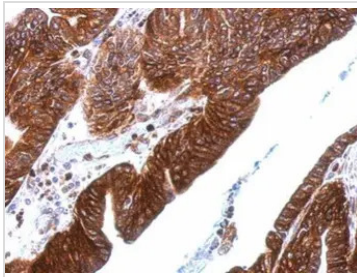
For laboratory research use only. Not for any clinical, therapeutic, or diagnostic use in humans or animals. Not for animal or human consumption.

Note

Purchasers shall not, and agree not to enable third parties to, analyze, copy, reverse engineer or otherwise attempt to determine the structure or sequence of the product.

DATA IMAGES

GTK108277 WB Image

Various whole cell extracts (30 µg) were separated by 7.5% SDS-PAGE, and the membrane was blotted with Thrombomodulin antibody [C3], C-term (GTK108277) diluted at 1:500. The HRP-conjugated anti-rabbit IgG antibody (GTK213110-01) was used to detect the primary antibody. Corresponding RNA expression data for the same cell lines are based on Human Protein Atlas program.

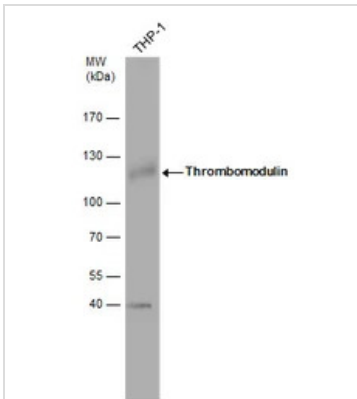

GTK108277 IHC-P Image

Thrombomodulin antibody [C3], C-term detects THBD protein at cytosol and membrane on human gastric cancer by immunohistochemical analysis.

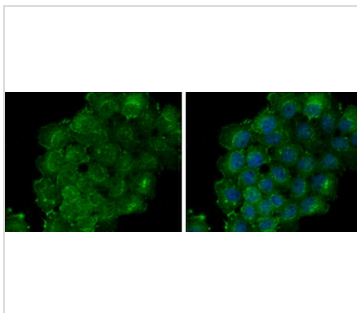
Sample: Paraffin-embedded gastric cancer.

Thrombomodulin antibody [C3], C-term (GTK108277) dilution: 1:500.

Antigen Retrieval: Trilogy™ (EDTA based, pH 8.0) buffer, 15min


GTK108277 WB Image

Thrombomodulin antibody detects Thrombomodulin protein by Western blot analysis. Whole cell extracts (30 µg) was separated by 7.5% SDS-PAGE, and the membrane was blotted with Thrombomodulin antibody (GTK108277) diluted by 1:500.


GTK108277 ICC/IF Image

Thrombomodulin antibody [C3], C-term detects Thrombomodulin protein at junction by immunofluorescent analysis.

Sample: A431 cells were fixed in 4% paraformaldehyde at RT for 15 min.

Green: Thrombomodulin protein stained by Thrombomodulin antibody [C3], C-term (GTK108277) diluted at 1:200.

Blue: Hoechst 33342 staining.



For full product information, images and publications, please visit our [website](https://www.genetex.com).