

TIM17 antibody [C1C3]

Cat. No. GTX108280

Host	Rabbit
Clonality	Polyclonal
Isotype	IgG
Applications	WB, ICC/IF
Reactivity	Human, Mouse

References (4)

Package

100 µl, 25 µl

Applications

Application Note

*Optimal dilutions/concentrations should be determined by the researcher.

Suggested dilution	Recommended dilution
WB	1:500-1:3000
ICC/IF	1:100-1:1000

Not tested in other applications.

Calculated MW 18 kDa. ([Note](#))

Properties

Form	Liquid
Buffer	0.1M Tris, 0.1M Glycine, 10% Glycerol
Preservative	0.01% Thimerosal
Storage	Store as concentrated solution. Centrifuge briefly prior to opening vial. For short-term storage (1-2 weeks), store at 4°C. For long-term storage, aliquot and store at -20°C or below. Avoid multiple freeze-thaw cycles.
Concentration	1 mg/ml (Please refer to the vial label for the specific concentration.)
Immunogen	Carrier-protein conjugated synthetic peptide encompassing a sequence within the C-terminus region of human TIM17. The exact sequence is proprietary.
Purification	Purified by antigen-affinity chromatography.
Conjugation	Unconjugated

Note

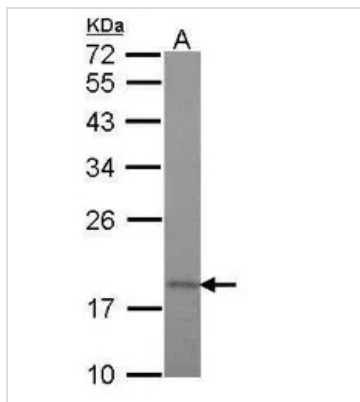
For laboratory research use only. Not for any clinical, therapeutic, or diagnostic use in humans or animals. Not for animal or human consumption.

Purchasers shall not, and agree not to enable third parties to, analyze, copy, reverse engineer or otherwise attempt to determine the structure or sequence of the product.



For full product information, images and publications, please visit our [website](#).

DATA IMAGES


GTx108280 WB Image

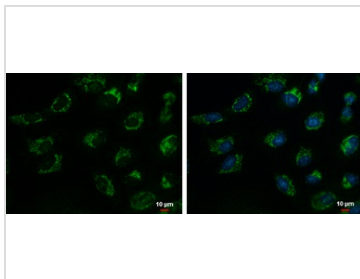
Sample (30 µg of whole cell lysate)

A: HeLa

12% SDS PAGE

GTx108280 diluted at 1:1000

The HRP-conjugated anti-rabbit IgG antibody (GTx213110-01) was used to detect the primary antibody.


GTx108280 ICC/IF Image

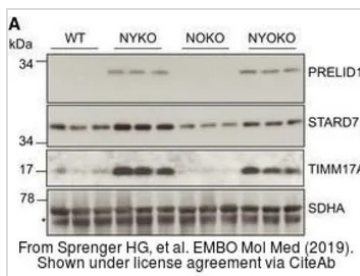
TIM17 antibody detects TIM17 protein at mitochondria by immunofluorescent analysis.

Sample: A549 cells were fixed in ice-cold MeOH for 5 min.

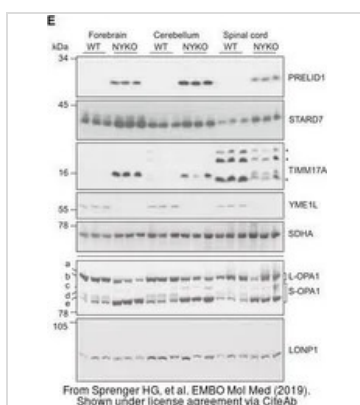
Green: TIM17 protein stained by TIM17 antibody (GTx108280) diluted at 1:500.

Blue: Hoechst 33342 staining.

Scale bar = 10 µm.


GTx108280 WB Image

The data was published in the journal EMBO Mol Med in 2019. [PMID: 30389680](https://pubmed.ncbi.nlm.nih.gov/30389680/)


GTx108280 WB Image

The data was published in the journal EMBO Mol Med in 2019. [PMID: 30389680](https://pubmed.ncbi.nlm.nih.gov/30389680/)



For full product information, images and publications, please visit our [website](https://www.genetex.com).