

Caveolin 2 antibody

Cat. No. GTX108294

Host	Rabbit
Clonality	Polyclonal
Isotype	IgG
Applications	WB, ICC/IF, IHC-P, IP
Reactivity	Human, Mouse, Rat

References (1)

Package

100 µl, 25 µl

Applications

Application Note

*Optimal dilutions/concentrations should be determined by the researcher.

Suggested dilution	Recommended dilution
WB	1:500-1:3000
ICC/IF	1:100-1:1000
IHC-P	1:100-1:1000
IP	1:100-1:500

Not tested in other applications.

Calculated MW 18 kDa. ([Note](#))

Properties

Form	Liquid
Buffer	0.1M Tris, 0.1M Glycine, 10% Glycerol
Preservative	0.01% Thimerosal
Storage	Store as concentrated solution. Centrifuge briefly prior to opening vial. For short-term storage (1-2 weeks), store at 4°C. For long-term storage, aliquot and store at -20°C or below. Avoid multiple freeze-thaw cycles.
Concentration	0.94 mg/ml (Please refer to the vial label for the specific concentration.)
Immunogen	Carrier-protein conjugated synthetic peptide encompassing a sequence within the N-terminus region of human Caveolin 2. The exact sequence is proprietary.
Purification	Purified by antigen-affinity chromatography.
Conjugation	Unconjugated



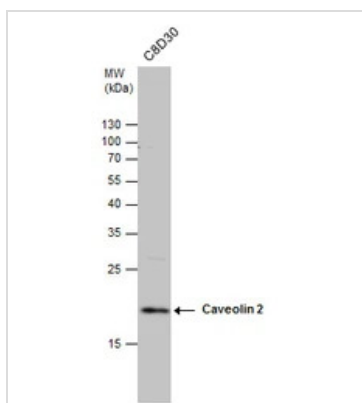
For full product information, images and publications, please visit our [website](#).

For laboratory research use only. Not for any clinical, therapeutic, or diagnostic use in humans or animals. Not for animal or human consumption.

Note

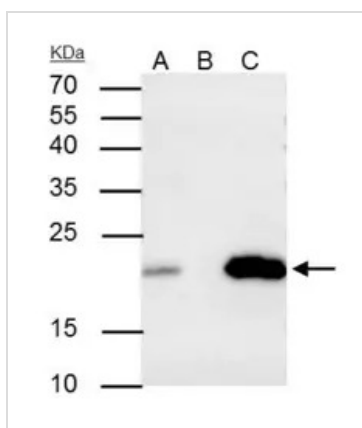
Purchasers shall not, and agree not to enable third parties to, analyze, copy, reverse engineer or otherwise attempt to determine the structure or sequence of the product.

DATA IMAGES



GTX108294 WB Image

Caveolin 2 antibody detects Caveolin 2 protein by western blot analysis. Whole cell extracts (30 µg) was separated by 15% SDS-PAGE, and the membrane was blotted with Caveolin 2 antibody (GTX108294) diluted at 1:1000.



GTX108294 IP Image

Caveolin 2 antibody immunoprecipitates caveolin 2 protein in IP experiments.

IP samples: A549 whole cell extract

A. 30 µg A549 whole cell extract

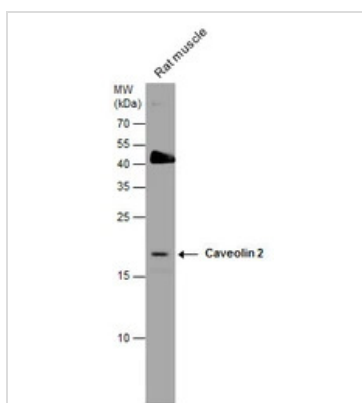
B. Control with 4 µg of preimmune Rabbit IgG

C. Immunoprecipitation of caveolin 2 protein by 4 µg Caveolin 2 antibody (GTX108294)

15 % SDS-PAGE

The immunoprecipitated caveolin 2 protein was detected by Caveolin 2 antibody (GTX108294) diluted at 1:500.

[EasyBlot anti-rabbit IgG (GTX221666-01) was used as a secondary reagent]



GTX108294 WB Image

Caveolin 2 antibody detects Caveolin 2 protein by western blot analysis. Rat tissue extracts (50 µg) was separated by 15% SDS-PAGE, and the membrane was blotted with Caveolin 2 antibody (GTX108294) diluted at 1:1000.



For full product information, images and publications, please visit our [website](https://www.genetex.com).