

COL4A3BP antibody [C3], C-term

Cat. No. GTX108337

Host	Rabbit
Clonality	Polyclonal
Isotype	IgG
Applications	WB, ICC/IF, IHC-P
Reactivity	Human, Mouse

Package
100 µl, 25 µl

Applications

Application Note

*Optimal dilutions/concentrations should be determined by the researcher.

Suggested dilution	Recommended dilution
WB	1:500-1:3000
ICC/IF	1:100-1:1000
IHC-P	1:100-1:1000

Not tested in other applications.

Calculated MW 71 kDa. ([Note](#))

Properties

Form	Liquid
Buffer	0.1M Tris, 0.1M Glycine, 10% Glycerol
Preservative	0.01% Thimerosal
Storage	Store as concentrated solution. Centrifuge briefly prior to opening vial. For short-term storage (1-2 weeks), store at 4°C. For long-term storage, aliquot and store at -20°C or below. Avoid multiple freeze-thaw cycles.
Concentration	1 mg/ml (Please refer to the vial label for the specific concentration.)
Immunogen	Carrier-protein conjugated synthetic peptide encompassing a sequence within the C-terminus region of human COL4A3BP. The exact sequence is proprietary.
Purification	Purified by antigen-affinity chromatography.
Conjugation	Unconjugated

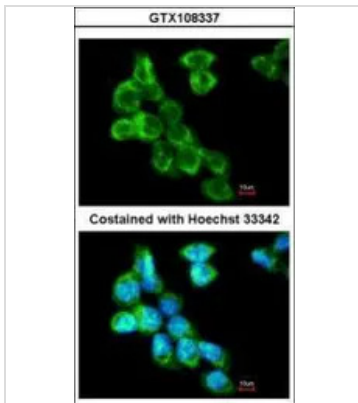
Note

For laboratory research use only. Not for any clinical, therapeutic, or diagnostic use in humans or animals. Not for animal or human consumption.

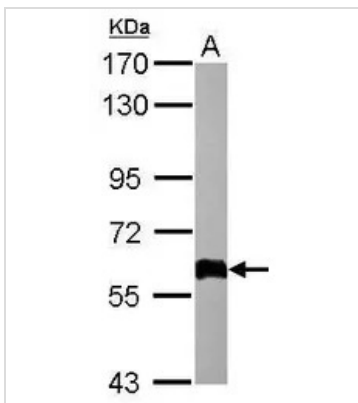
Purchasers shall not, and agree not to enable third parties to, analyze, copy, reverse engineer or otherwise attempt to determine the structure or sequence of the product.



For full product information, images and publications, please visit our [website](#).

DATA IMAGES

GTx108337 ICC/IF Image

Immunofluorescence analysis of methanol-fixed A431, using CERT(GTx108337) antibody at 1:200 dilution.

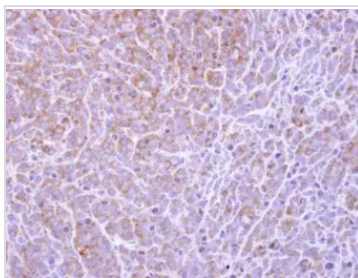

GTx108337 WB Image

Sample (50 ug of whole cell lysate)

A: Mouse white adipose

7.5% SDS PAGE

GTx108337 diluted at 1:1000

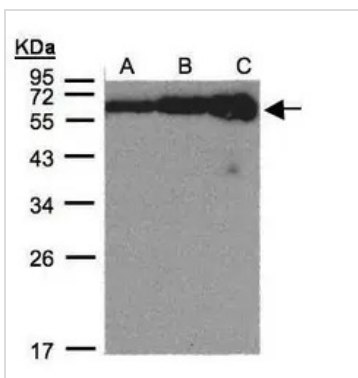

GTx108337 IHC-P Image

COL4A3BP antibody [C3], C-term detects COL4A3BP protein at cytoplasm on BT483 xenograft by immunohistochemical analysis.

Sample: Paraffin-embedded BT483 xenograft.

COL4A3BP antibody [C3], C-term (GTx108337) dilution: 1:500.

Antigen Retrieval: Trilogy™ (EDTA based, pH 8.0) buffer, 15min


GTx108337 WB Image

Sample(30 µg of whole cell lysate)

A:Hep G2(GTx27900)

B:MOLT4(GTx27912)

C:Raji(GTx27908)

12% SDS PAGE

GTx108337 diluted at 1:500



For full product information, images and publications, please visit our [website](http://www.genetex.com).