

Syntenin 1 antibody [C2C3], C-term

Cat. No. GTX108470

Host	Rabbit
Clonality	Polyclonal
Isotype	IgG
Applications	WB, ICC/IF, IHC-P, IHC-Fr
Reactivity	Human, Mouse, Rat, Zebrafish

References (3)

Package

100 µl, 25 µl

Applications

Application Note

*Optimal dilutions/concentrations should be determined by the researcher.

Suggested dilution	Recommended dilution
WB	1:500-1:3000
ICC/IF	1:100-1:1000
IHC-P	1:100-1:1000
IHC-Fr	1:100-1:1000

Not tested in other applications.

Calculated MW 32 kDa. ([Note](#))

Properties

Form	Liquid
Buffer	0.1M Tris, 0.1M Glycine, 10% Glycerol
Preservative	0.01% Thimerosal
Storage	Store as concentrated solution. Centrifuge briefly prior to opening vial. For short-term storage (1-2 weeks), store at 4°C. For long-term storage, aliquot and store at -20°C or below. Avoid multiple freeze-thaw cycles.
Concentration	0.78 mg/ml (Please refer to the vial label for the specific concentration.)
Immunogen	Carrier-protein conjugated synthetic peptide encompassing a sequence within the C-terminus region of human Syntenin 1. The exact sequence is proprietary.
Purification	Purified by antigen-affinity chromatography.
Conjugation	Unconjugated

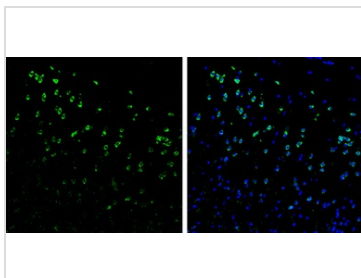


For full product information, images and publications, please visit our [website](#).

For laboratory research use only. Not for any clinical, therapeutic, or diagnostic use in humans or animals. Not for animal or human consumption.

Note

Purchasers shall not, and agree not to enable third parties to, analyze, copy, reverse engineer or otherwise attempt to determine the structure or sequence of the product.

DATA IMAGES

GTx108470 IHC-Fr Image

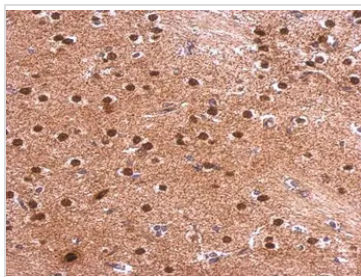
Syntenin 1 antibody [C2C3], C-term detects Syntenin 1 protein by immunohistochemical analysis.

Samples: Frozen Sectioned adult mouse brain.

Green: Syntenin 1 protein stained by Syntenin 1 antibody [C2C3], C-term (GTx108470) diluted at 1:250.

Blue: Fluoroshield with DAPI (GTx30920).

Antigen Retrieval: Citrate buffer, pH 6.0, 10 min

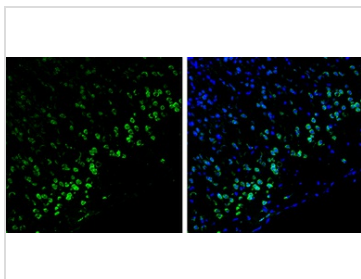

GTx108470 IHC-P Image

Syntenin 1 antibody [C2C3], C-term detects Syntenin 1 protein at cytosol on rat fore brain by immunohistochemical analysis.

Sample: Paraffin-embedded rat fore brain.

Syntenin 1 antibody [C2C3], C-term (GTx108470) dilution: 1:500.

Antigen Retrieval: Trilogy™ (EDTA based, pH 8.0) buffer, 15min


GTx108470 IHC-Fr Image

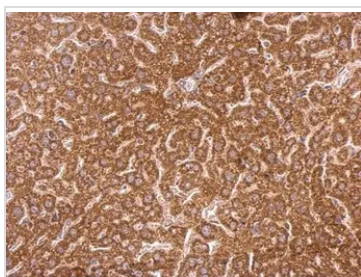
Syntenin 1 antibody [C2C3], C-term detects Syntenin 1 protein by immunohistochemical analysis.

Samples: Frozen Sectioned adult mouse brain.

Green: Syntenin 1 protein stained by Syntenin 1 antibody [C2C3], C-term (GTx108470) diluted at 1:250.

Blue: Fluoroshield with DAPI (GTx30920).

Antigen Retrieval: Citrate buffer, pH 6.0, 10 min


GTx108470 IHC-P Image

Syntenin 1 antibody [C2C3], C-term detects Syntenin 1 protein at cytosol on mouse kidney by immunohistochemical analysis.

Sample: Paraffin-embedded mouse kidney.

Syntenin 1 antibody [C2C3], C-term (GTx108470) dilution: 1:500.

Antigen Retrieval: Trilogy™ (EDTA based, pH 8.0) buffer, 15min



For full product information, images and publications, please visit our [website](https://www.genetex.com).