

BCA1 antibody [N3C3]

Cat. No. GTX108471

Host	Rabbit
Clonality	Polyclonal
Isotype	IgG
Applications	WB, ICC/IF, IHC-P
Reactivity	Human

References (2)

★★★★★ Review (2)

Package

100 µl, 25 µl

Applications

Application Note

*Optimal dilutions/concentrations should be determined by the researcher.

Suggested dilution	Recommended dilution
WB	1:1000-1:10000
ICC/IF	1:100-1:1000
IHC-P	1:100-1:1000

Not tested in other applications.

Calculated MW 13 kDa. ([Note](#))

Properties

Form	Liquid
Buffer	PBS, 20% Glycerol
Preservative	0.025% ProClin 300
Storage	Store as concentrated solution. Centrifuge briefly prior to opening vial. For short-term storage (1-2 weeks), store at 4°C. For long-term storage, aliquot and store at -20°C or below. Avoid multiple freeze-thaw cycles.
Concentration	1.21 mg/ml (Please refer to the vial label for the specific concentration.)
Immunogen	Carrier-protein conjugated synthetic peptide encompassing a sequence within the C-terminus region of human BCA1. The exact sequence is proprietary.
Purification	Purified by antigen-affinity chromatography.
Conjugation	Unconjugated

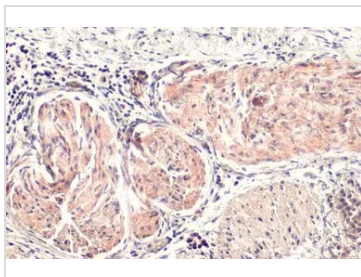
Note

For laboratory research use only. Not for any clinical, therapeutic, or diagnostic use in humans or animals. Not for animal or human consumption.

Purchasers shall not, and agree not to enable third parties to, analyze, copy, reverse engineer or otherwise attempt to determine the structure or sequence of the product.



For full product information, images and publications, please visit our [website](#).

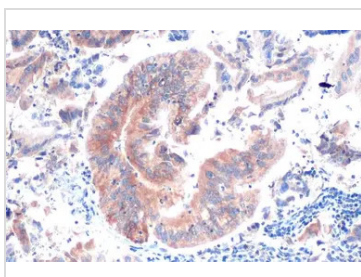
DATA IMAGES

GTx108471 IHC-P Image

BCA1 antibody [N3C3] detects BCA1 protein by immunohistochemical analysis.

Sample: Paraffin-embedded human esophageal carcinoma.

BCA1 stained by BCA1 antibody [N3C3] (GTx108471) diluted at 1:500.

Antigen Retrieval: Citrate buffer, pH 6.0, 15 min

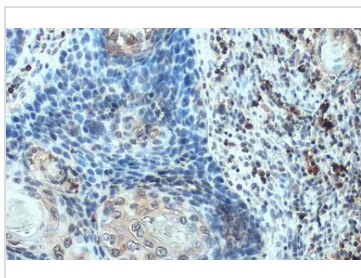

GTx108471 IHC-P Image

BCA1 antibody [N3C3] detects BCA1 protein at cytoplasm by immunohistochemical analysis.

Sample: Paraffin-embedded human esophageal carcinoma.

BCA1 stained by BCA1 antibody [N3C3] (GTx108471) diluted at 1:500.

Antigen Retrieval: Citrate buffer, pH 6.0, 15 min

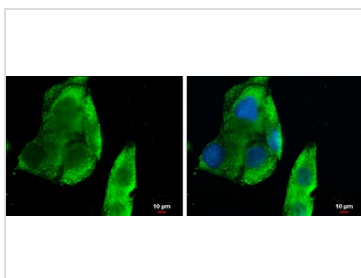

GTx108471 IHC-P Image

BCA1 antibody [N3C3] detects BCA1 protein at cell membrane and cytoplasm by immunohistochemical analysis.

Sample: Paraffin-embedded human esophageal carcinoma.

BCA1 stained by BCA1 antibody [N3C3] (GTx108471) diluted at 1:100.

Antigen Retrieval: Citrate buffer, pH 6.0, 15 min


GTx108471 ICC/IF Image

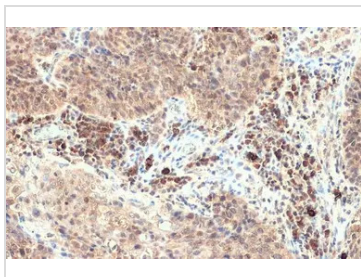
BCA1 antibody [N3C3] detects secreted BCA1 protein by immunofluorescent analysis.

Sample: HepG2 cells were fixed in 4% paraformaldehyde at RT for 15 min.

Green: BCA1 protein stained by BCA1 antibody [N3C3] (GTx108471) diluted at 1:500.

Blue: Hoechst 33342 staining.

Scale bar = 10 μ m.


GTx108471 IHC-P Image

BCA1 antibody [N3C3] detects BCA1 protein at cytoplasm by immunohistochemical analysis.

Sample: Paraffin-embedded human esophageal carcinoma.

BCA1 stained by BCA1 antibody [N3C3] (GTx108471) diluted at 1:500.

Antigen Retrieval: Citrate buffer, pH 6.0, 15 min



For full product information, images and publications, please visit our [website](https://www.genetex.com).