

## CD3 epsilon antibody [C2C3], C-term

**Cat. No. GTX108478**

|                     |            |
|---------------------|------------|
| <b>Host</b>         | Rabbit     |
| <b>Clonality</b>    | Polyclonal |
| <b>Isotype</b>      | IgG        |
| <b>Applications</b> | WB         |
| <b>Reactivity</b>   | Human      |

**Package**  
100 µl, 25 µl

## Applications

**Application Note**

\*Optimal dilutions/concentrations should be determined by the researcher.

**Suggested dilution**                      **Recommended dilution**

WB    1:500-1:3000

Not tested in other applications.

**Calculated MW**                      23 kDa. ([Note](#))

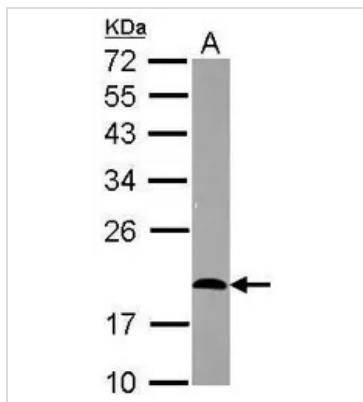
## Properties

**Form**                                      Liquid**Buffer**                                    0.1M Tris, 0.1M Glycine, 10% Glycerol**Preservative**                          0.01% Thimerosal**Storage**                                  Store as concentrated solution. Centrifuge briefly prior to opening vial. For short-term storage (1-2 weeks), store at 4°C. For long-term storage, aliquot and store at -20°C or below. Avoid multiple freeze-thaw cycles.**Concentration**                          0.86 mg/ml (Please refer to the vial label for the specific concentration.)**Immunogen**                              Synthetic peptide encompassing a sequence within the Intracellular domain of human CD3 epsilon. The exact sequence is proprietary.**Purification**                              Purified by antigen-affinity chromatography.**Conjugation**                              Unconjugated**Note**  
For laboratory research use only. Not for any clinical, therapeutic, or diagnostic use in humans or animals. Not for animal or human consumption.

Purchasers shall not, and agree not to enable third parties to, analyze, copy, reverse engineer or otherwise attempt to determine the structure or sequence of the product.

For full product information, images and publications, please visit our [website](#).

DATA IMAGES



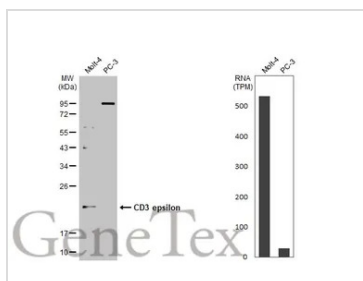
**GTX108478 WB Image**

Sample (30 ug of whole cell lysate)

A: K562

12% SDS PAGE

GTX108478 diluted at 1:1000



**GTX108478 WB Image**

Various whole cell extracts (30  $\mu$ g) were separated by 12% SDS-PAGE, and the membrane was blotted with CD3 epsilon antibody [C2C3], C-term (GTX108478) diluted at 1:1000. The HRP-conjugated anti-rabbit IgG antibody (GTX213110-01) was used to detect the primary antibody. Corresponding RNA expression data for the same cell lines are based on Human Protein Atlas program.



For full product information, images and publications, please visit our [website](#).