

Noelin antibody [C3], C-term

Cat. No. GTX108528

Host	Rabbit
Clonality	Polyclonal
Isotype	IgG
Applications	WB, ICC/IF, IHC-P
Reactivity	Human, Mouse

Package
100 µl, 25 µl

Applications

Application Note

*Optimal dilutions/concentrations should be determined by the researcher.

Suggested dilution	Recommended dilution
WB	1:500-1:3000
ICC/IF	1:100-1:1000
IHC-P	1:100-1:1000

Not tested in other applications.

Calculated MW 55 kDa. ([Note](#))

Properties

Form	Liquid
Buffer	0.1M Tris, 0.1M Glycine, 10% Glycerol
Preservative	0.01% Thimerosal
Storage	Store as concentrated solution. Centrifuge briefly prior to opening vial. For short-term storage (1-2 weeks), store at 4°C. For long-term storage, aliquot and store at -20°C or below. Avoid multiple freeze-thaw cycles.
Concentration	1 mg/ml (Please refer to the vial label for the specific concentration.)
Immunogen	Carrier-protein conjugated synthetic peptide encompassing a sequence within the C-terminus region of human Noelin. The exact sequence is proprietary.
Purification	Purified by antigen-affinity chromatography.
Conjugation	Unconjugated

Note

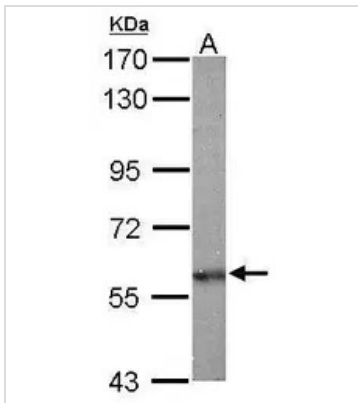
For laboratory research use only. Not for any clinical, therapeutic, or diagnostic use in humans or animals. Not for animal or human consumption.

Purchasers shall not, and agree not to enable third parties to, analyze, copy, reverse engineer or otherwise attempt to determine the structure or sequence of the product.



For full product information, images and publications, please visit our [website](#).

DATA IMAGES



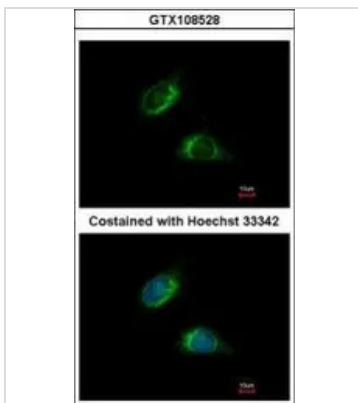
GTX108528 WB Image

Sample (50 ug of whole cell lysate)

A: Mouse brain

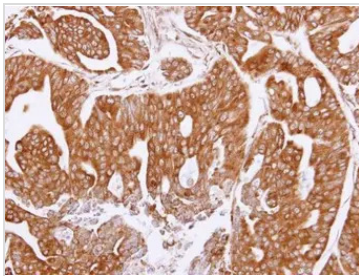
7.5% SDS PAGE

GTX108528 diluted at 1:1000



GTX108528 ICC/IF Image

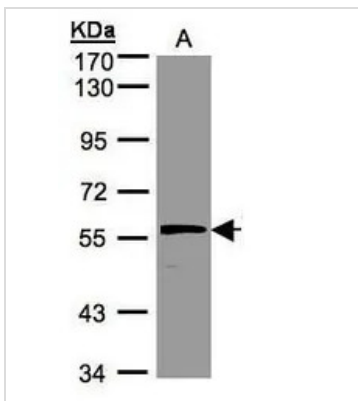
Immunofluorescence analysis of methanol-fixed HeLa, using Noelin(GTX108528) antibody at 1:500 dilution.



GTX108528 IHC-P Image

Immunohistochemical analysis of paraffin-embedded NCI-N87 xenograft, using Noelin(GTX108528) antibody at 1:100 dilution.

Antigen Retrieval: Trilogy™ (EDTA based, pH 8.0) buffer, 15min



GTX108528 WB Image

Sample(30 µg of whole cell lysate)

A:Hep G2(GTX27900)

7.5% SDS PAGE

GTX108528 diluted at 1:500



For full product information, images and publications, please visit our [website](https://www.genetex.com).