

## AXL antibody

Cat. No. GTX108560

Host	Rabbit
Clonality	Polyclonal
Isotype	IgG
Application	WB, IHC-P
Reactivity	Human

Reference ( 1 )

Package

100 µl, 25 µl

## APPLICATION

## Application Note

\*Optimal dilutions/concentrations should be determined by the researcher.

Suggested dilution	Recommended dilution
WB	1:500-1:3000
IHC-P	1:100-1:1000

Not tested in other applications.

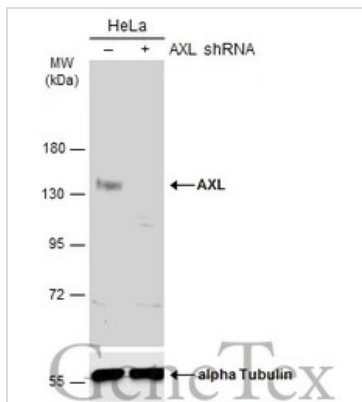
Calculated MW 98 kDa. ( [Note](#) )

## PROPERTIES

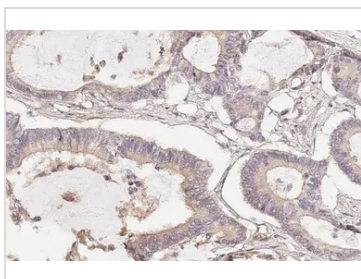
Form	Liquid
Buffer	0.1M Tris, 0.1M Glycine, 10% Glycerol
Preservative	0.01% Thimerosal
Storage	Store as concentrated solution. Centrifuge briefly prior to opening vial. For short-term storage (1-2 weeks), store at 4°C. For long-term storage, aliquot and store at -20°C or below. Avoid multiple freeze-thaw cycles.
Concentration	0.34 mg/ml (Please refer to the vial label for the specific concentration.)
Immunogen	Recombinant protein encompassing a sequence within the Intracellular domain of human AXL. The exact sequence is proprietary.
Purification	Purified by antigen-affinity chromatography.
Conjugation	Unconjugated
Note	<p>For laboratory research use only. Not for any clinical, therapeutic, or diagnostic use in humans or animals. Not for animal or human consumption.</p> <p>Purchasers shall not, and agree not to enable third parties to, analyze, copy, reverse engineer or otherwise attempt to determine the structure or sequence of the product.</p>



For full product information, images and publications, please visit our [website](#).

**DATA IMAGES**

**GTX108560 WB Image**

Non-transfected (–) and transfected (+) 293T whole cell extracts (60 µg) were separated by 7.5% SDS-PAGE, and the membrane was blotted with AXL antibody (GTX108560) diluted at 1:500. The HRP-conjugated anti-rabbit IgG antibody (GTX213110-01) was used to detect the primary antibody, and the signal was developed with Trident ECL plus-Enhanced.

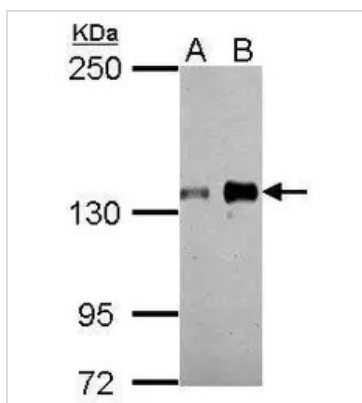

**GTX108560 IHC-P Image**

AXL antibody detects AXL protein at cell membrane by immunohistochemical analysis.

Sample: Paraffin-embedded human colon cancer.

AXL stained by AXL antibody (GTX108560) diluted at 1:500.

Antigen Retrieval: Citrate buffer, pH 6.0, 15 min


**GTX108560 WB Image**

Sample (30 µg of whole cell lysate)

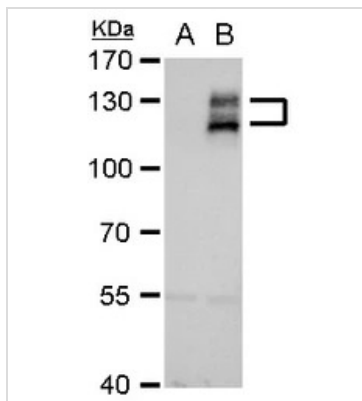
A: A549

B: H1299

5% SDS PAGE

GTX108560 diluted at 1:500

The HRP-conjugated anti-rabbit IgG antibody (GTX213110-01) was used to detect the primary antibody.


**GTX108560 WB Image**

AXL antibody detects AXL protein by western blot analysis.

A. 30 µg 293T whole cell extract

B. 30 µg whole cell extract of human AXL-transfected 293T cells

7.5% SDS-PAGE

AXL antibody (GTX108560) dilution: 1:2000

The HRP-conjugated anti-rabbit IgG antibody (GTX213110-01) was used to detect the primary antibody.



For full product information, images and publications, please visit our [website](https://www.genetex.com).