

# GPX7 antibody

**Cat. No. GTX108578**

<b>Host</b>	Rabbit
<b>Clonality</b>	Polyclonal
<b>Isotype</b>	IgG
<b>Application</b>	WB, IHC-P, IP
<b>Reactivity</b>	Human, Mouse

Reference ( 4 )

★★★★★ Review ( 1 )

Package

100 µl, 25 µl

## PRODUCT

### Summary

GPX7 antibody detects glutathione peroxidase 7 (GPX7), a secreted enzyme with a predicted molecular weight of ~21 kDa. GPX7 serves as a stress sensor and regulates several genes involved in reactive oxygen species (ROS)-induced DNA damage.

## APPLICATION

### Application Note

\*Optimal dilutions/concentrations should be determined by the researcher.

Suggested dilution	Recommended dilution
WB	1:500-1:3000
IHC-P	1:100-1:1000
IP	Assay dependent

**Note : Recommend using PVDF membrane.**

Not tested in other applications.

**Calculated MW** 21 kDa. ( [Note](#) )

## PROPERTIES

<b>Form</b>	Liquid
<b>Buffer</b>	0.1M Tris, 0.1M Glycine, 10% Glycerol
<b>Preservative</b>	0.01% Thimerosal
<b>Storage</b>	Store as concentrated solution. Centrifuge briefly prior to opening vial. For short-term storage (1-2 weeks), store at 4°C. For long-term storage, aliquot and store at -20°C or below. Avoid multiple freeze-thaw cycles.
<b>Concentration</b>	0.26 mg/ml (Please refer to the vial label for the specific concentration.)
<b>Immunogen</b>	Recombinant protein corresponding to human GPX7
<b>Purification</b>	Purified by antigen-affinity chromatography.
<b>Conjugation</b>	Unconjugated

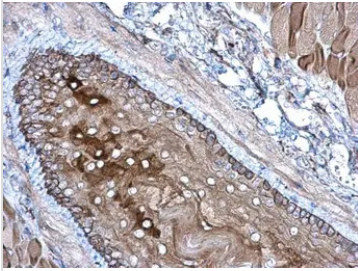


For full product information, images and publications, please visit our [website](#).

For laboratory research use only. Not for any clinical, therapeutic, or diagnostic use in humans or animals. Not for animal or human consumption.

**Note**

Purchasers shall not, and agree not to enable third parties to, analyze, copy, reverse engineer or otherwise attempt to determine the structure or sequence of the product.

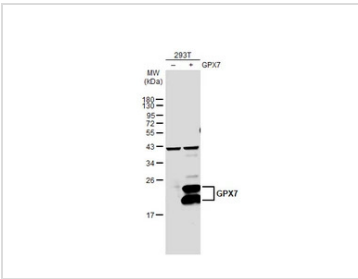
**DATA IMAGES**

**GTx108578 IHC-P Image**

GPX7 antibody detects GPX7 protein at cytoplasm on mouse esophagus by immunohistochemical analysis.

Sample: Paraffin-embedded mouse esophagus.

GPX7 antibody (GTx108578) diluted at 1:500.

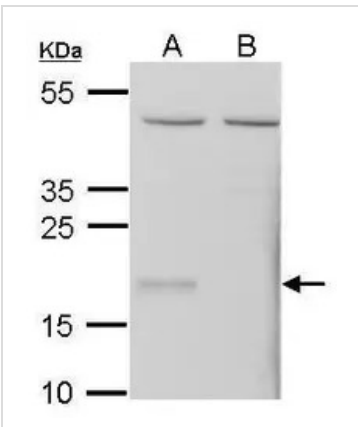
Antigen Retrieval: Trilogy™ (EDTA based, pH 8.0) buffer, 15min


**GTx108578 WB Image**

Non-transfected (-) and transfected (+) 293T whole cell extracts (30 µg) were separated by 12% SDS-PAGE,

and the membrane was blotted with GPX7 antibody (GTx108578) diluted at 1:500. The HRP-conjugated

anti-rabbit IgG antibody (GTx213110-01) was used to detect the primary antibody.


**GTx108578 WB Image**

Sample (20 ug of whole cell lysate)

A: Mouse embryonic fibroblast (WT)

B: Mouse embryonic fibroblast(Gpx7 -/-)

12% SDS PAGE

GTx108578 diluted at 1:1000



For full product information, images and publications, please visit our [website](https://www.genetex.com).