

GPX7 antibody

Cat. No. GTX108578

Host	Rabbit
Clonality	Polyclonal
Isotype	IgG
Applications	WB, IHC-P, IP
Reactivity	Human, Mouse

References (4)

★★★★★ Review (1)

Package

100 µl, 25 µl

PRODUCT

Summary

GPX7 antibody detects glutathione peroxidase 7 (GPX7), a secreted enzyme with a predicted molecular weight of ~21 kDa. GPX7 serves as a stress sensor and regulates several genes involved in reactive oxygen species (ROS)-induced DNA damage.

Applications

Application Note

*Optimal dilutions/concentrations should be determined by the researcher.

Suggested dilution

Recommended dilution

WB	1:500-1:3000
IHC-P	1:100-1:1000
IP	Assay dependent

Note : Recommend using PVDF membrane.

Not tested in other applications.

Calculated MW

21 kDa. ([Note](#))

Properties

Form	Liquid
Buffer	0.1M Tris, 0.1M Glycine, 10% Glycerol; 1% BSA
Preservative	0.01% Thimerosal
Storage	Store as concentrated solution. Centrifuge briefly prior to opening vial. For short-term storage (1-2 weeks), store at 4°C. For long-term storage, aliquot and store at -20°C or below. Avoid multiple freeze-thaw cycles.
Concentration	0.26 mg/ml (Please refer to the vial label for the specific concentration.)
Immunogen	Recombinant protein corresponding to human GPX7
Purification	Purified by antigen-affinity chromatography.
Conjugation	Unconjugated



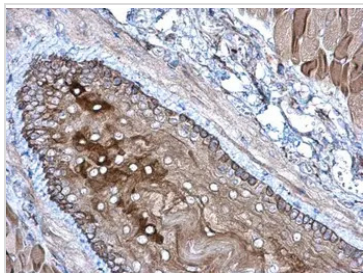
For full product information, images and publications, please visit our [website](#).

For laboratory research use only. Not for any clinical, therapeutic, or diagnostic use in humans or animals. Not for animal or human consumption.

Note

Purchasers shall not, and agree not to enable third parties to, analyze, copy, reverse engineer or otherwise attempt to determine the structure or sequence of the product.

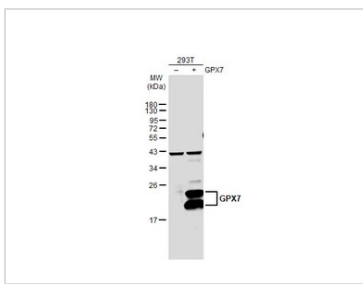
DATA IMAGES



GTX108578 IHC-P Image

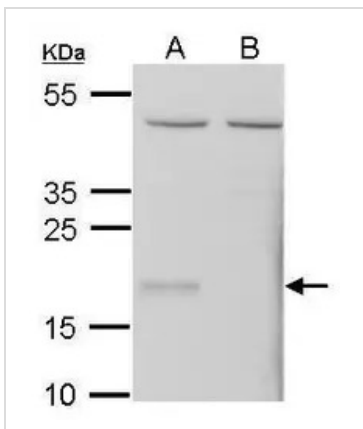
GPX7 antibody detects GPX7 protein at cytoplasm on mouse esophagus by immunohistochemical analysis.
 Sample: Paraffin-embedded mouse esophagus.
 GPX7 antibody (GTX108578) diluted at 1:500.

Antigen Retrieval: Trilogy™ (EDTA based, pH 8.0) buffer, 15min



GTX108578 WB Image

Non-transfected (-) and transfected (+) 293T whole cell extracts (30 µg) were separated by 12% SDS-PAGE, and the membrane was blotted with GPX7 antibody (GTX108578) diluted at 1:500. The HRP-conjugated anti-rabbit IgG antibody (GTX213110-01) was used to detect the primary antibody.



GTX108578 WB Image

Sample (20 ug of whole cell lysate)
 A: Mouse embryonic fibroblast (WT)
 B: Mouse embryonic fibroblast(Gpx7 -/-)

12% SDS PAGE
 GTX108578 diluted at 1:1000



For full product information, images and publications, please visit our [website](#).