

## Cytochrome C antibody

Cat. No. GTX108585

Host	Rabbit
Clonality	Polyclonal
Isotype	IgG
Applications	WB, ICC/IF, IHC-P, IHC-Fr
Reactivity	Human, Mouse, Rat, Drosophila, Dog

References ( 34 )

★★★★★ Review ( 2 )

Package

100 µl, 25 µl

## Applications

## Application Note

\*Optimal dilutions/concentrations should be determined by the researcher.

Suggested dilution	Recommended dilution
WB	1:500-1:3000
ICC/IF	Assay dependent
IHC-P	1:100-1:1000
IHC-Fr	Assay dependent

Not tested in other applications.

**Calculated MW** 12 kDa. ( [Note](#) )

## Properties

Form	Liquid
Buffer	PBS, 1% BSA, 20% Glycerol
Preservative	0.025% ProClin 300
Storage	Store as concentrated solution. Centrifuge briefly prior to opening vial. For short-term storage (1-2 weeks), store at 4°C. For long-term storage, aliquot and store at -20°C or below. Avoid multiple freeze-thaw cycles.
Concentration	0.18 mg/ml (Please refer to the vial label for the specific concentration.)
Immunogen	Full length human Cytochrome C Recombinant protein.
Purification	Purified by antigen-affinity chromatography.
Conjugation	Unconjugated

## Note

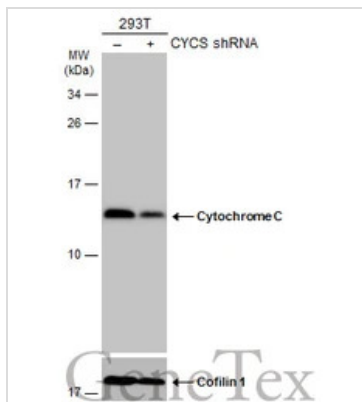
For laboratory research use only. Not for any clinical, therapeutic, or diagnostic use in humans or animals. Not for animal or human consumption.

Purchasers shall not, and agree not to enable third parties to, analyze, copy, reverse engineer or otherwise attempt to determine the structure or sequence of the product.

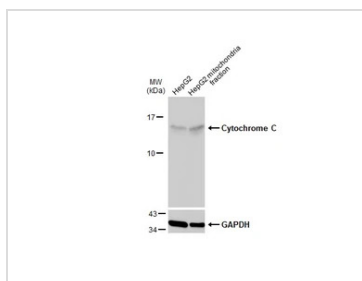


For full product information, images and publications, please visit our [website](#).

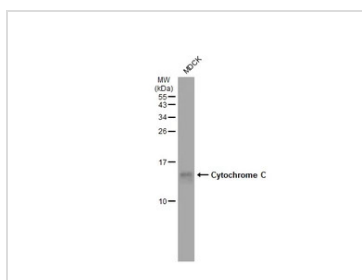
## DATA IMAGES


**GTX108585 WB Image**

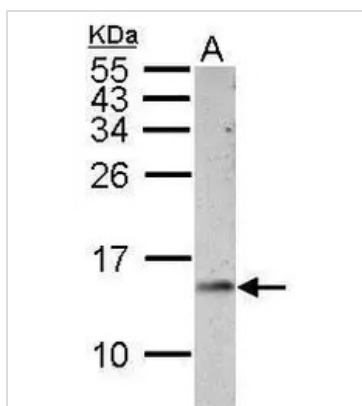
Non-transfected (–) and transfected (+) 293T whole cell extracts (30 µg) were separated by 15% SDS-PAGE, and the membrane was blotted with Cytochrome C antibody (GTX108585) diluted at 1:1000. The HRP-conjugated anti-rabbit IgG antibody (GTX213110-01) was used to detect the primary antibody.


**GTX108585 WB Image**

HepG2 and mitochondria extracts (30 µg) were separated by SDS-PAGE, and the membrane was blotted with Cytochrome C antibody (GTX108585) diluted at 1:2000. The HRP-conjugated anti-rabbit IgG antibody (GTX213110-01) was used to detect the primary antibody, and the signal was developed with Trident pico Western HRP Substrate.


**GTX108585 WB Image**

Whole cell extract (30 µg) was separated by 15% SDS-PAGE, and the membrane was blotted with Cytochrome C antibody (GTX108585) diluted at 1:1000. The HRP-conjugated anti-rabbit IgG antibody (GTX213110-01) was used to detect the primary antibody.


**GTX108585 WB Image**

Sample (30 µg of whole cell lysate)

A: PC-12

15% SDS PAGE

GTX108585 diluted at 1:1000

The HRP-conjugated anti-rabbit IgG antibody (GTX213110-01) was used to detect the primary antibody.



For full product information, images and publications, please visit our [website](https://www.genetex.com).