

ZO-1 antibody [C3], C-term

Cat. No. GTX108587

| | |
|---------------------|------------|
| Host | Rabbit |
| Clonality | Polyclonal |
| Isotype | IgG |
| Applications | WB |
| Reactivity | Human |

References (2)

Package

100 µl, 25 µl

Applications

Application Note

*Optimal dilutions/concentrations should be determined by the researcher.

| Suggested dilution | Recommended dilution |
|-----------------------------------|----------------------|
| WB | 1:500-1:3000 |
| Not tested in other applications. | |

Calculated MW 195 kDa. ([Note](#))

Properties

| | |
|----------------------|--|
| Form | Liquid |
| Buffer | PBS, 1% BSA, 20% Glycerol |
| Preservative | 0.01% Thimerosal |
| Storage | Store as concentrated solution. Centrifuge briefly prior to opening vial. For short-term storage (1-2 weeks), store at 4°C. For long-term storage, aliquot and store at -20°C or below. Avoid multiple freeze-thaw cycles. |
| Concentration | 1 mg/ml (Please refer to the vial label for the specific concentration.) |
| Immunogen | Recombinant protein encompassing a sequence within the C-terminus region of human ZO-1. The exact sequence is proprietary. |
| Purification | Purified by antigen-affinity chromatography. |
| Conjugation | Unconjugated |

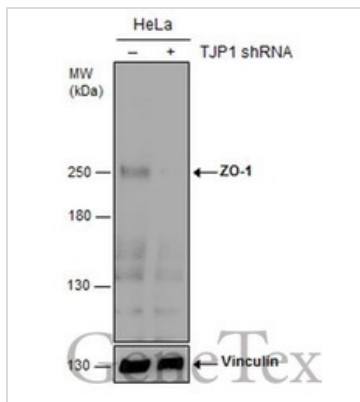
Note

For laboratory research use only. Not for any clinical, therapeutic, or diagnostic use in humans or animals. Not for animal or human consumption.

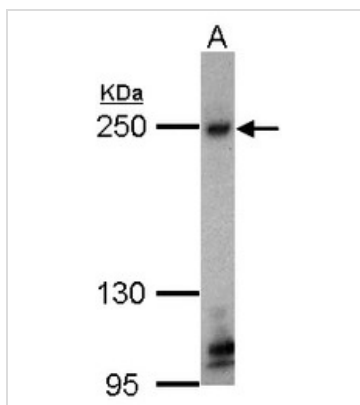
Purchasers shall not, and agree not to enable third parties to, analyze, copy, reverse engineer or otherwise attempt to determine the structure or sequence of the product.



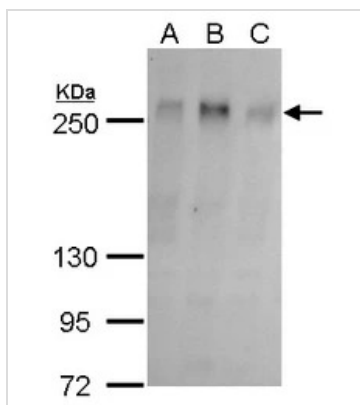
For full product information, images and publications, please visit our [website](#).

DATA IMAGES

GTx108587 WB Image

Non-transfected (–) and transfected (+) HeLa whole cell extracts (30 µg) were separated by 5% SDS-PAGE, and the membrane was blotted with ZO-1 antibody [C3], C-term (GTx108587) diluted at 1:500.


GTx108587 WB Image

Sample (30 ug of whole cell lysate)
A: HCT116
5% SDS PAGE
GTx108587 diluted at 1:1000


GTx108587 WB Image

ZO-1 antibody detects ZO-1 protein by western blot analysis.
A. 30 µg 293T whole cell lysate/extract
B. 30 µg A431 whole cell lysate/extract
C. 30 µg HeLa whole cell lysate/extract
5 % SDS-PAGE
ZO-1 antibody (GTx108587) dilution: 1:500



For full product information, images and publications, please visit our [website](https://www.genetex.com).