

Profilin 2 antibody

Cat. No. GTX108589

Host	Rabbit
Clonality	Polyclonal
Isotype	IgG
Applications	WB, IHC-P
Reactivity	Human, Mouse, Rat

Package
100 µl, 25 µl

Applications

Application Note

*Optimal dilutions/concentrations should be determined by the researcher.

Suggested dilution	Recommended dilution
WB	1:500-1:3000
IHC-P	1:100-1:1000

Not tested in other applications.

Calculated MW	15 kDa. (Note)
Product Note	This antibody may cross-react with human Profilin 1.

Properties

Form	Liquid
Buffer	0.1M Tris, 0.1M Glycine, 10% Glycerol
Preservative	0.01% Thimerosal
Storage	Store as concentrated solution. Centrifuge briefly prior to opening vial. For short-term storage (1-2 weeks), store at 4°C. For long-term storage, aliquot and store at -20°C or below. Avoid multiple freeze-thaw cycles.
Concentration	1 mg/ml (Please refer to the vial label for the specific concentration.)
Immunogen	Recombinant protein encompassing a sequence within the center region of human Profilin 2. The exact sequence is proprietary.
Purification	Purified by antigen-affinity chromatography.
Conjugation	Unconjugated

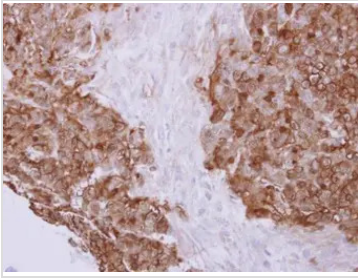
Note

For laboratory research use only. Not for any clinical, therapeutic, or diagnostic use in humans or animals. Not for animal or human consumption.

Purchasers shall not, and agree not to enable third parties to, analyze, copy, reverse engineer or otherwise attempt to determine the structure or sequence of the product.



For full product information, images and publications, please visit our [website](#).

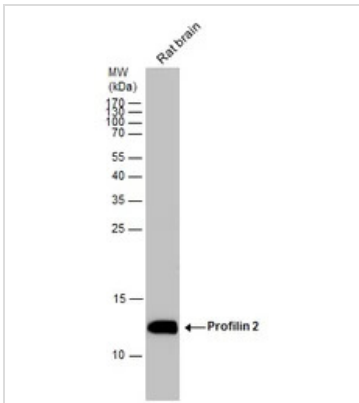
DATA IMAGES

GTX108589 IHC-P Image

Profilin 2 antibody detects PFN2 protein at cytoplasm on human colon carcinoma by immunohistochemical analysis.

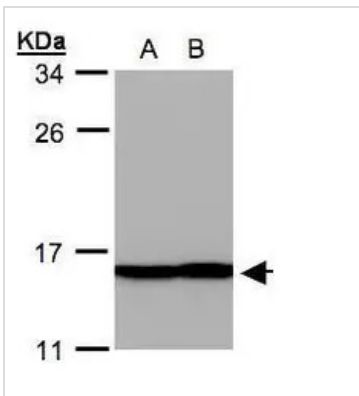
Sample: Paraffin-embedded colon carcinoma.

Profilin 2 antibody (GTX108589) dilution: 1:500.

Antigen Retrieval: Trilogy™ (EDTA based, pH 8.0) buffer, 15min


GTX108589 WB Image

Rat tissue extract (50 µg) was separated by 15% SDS-PAGE, and the membrane was blotted with Profilin 2 antibody (GTX108589) diluted at 1:1000.


GTX108589 WB Image

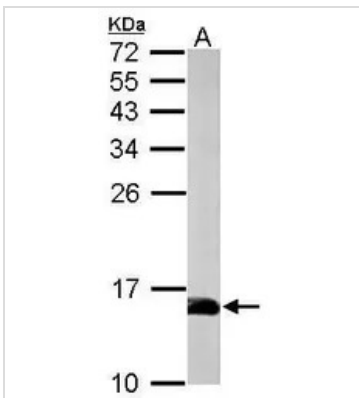
Sample(30 ug whole cell lysate)

A: A431(GTX27909)

B: H1299

12% SDS PAGE

GTX108589 diluted at 1:500


GTX108589 WB Image

Sample (50 ug of whole cell lysate)

A: mouse brain

15% SDS PAGE

GTX108589 diluted at 1:1000



For full product information, images and publications, please visit our [website](http://www.genetex.com).