

Human N-Ras protein, His tag

Cat. No. GTX108598-pro

| | |
|---------|-------|
| Species | Human |
|---------|-------|

Package

100 µg, 25 µg

PROPERTIES

| | |
|------|--------|
| Form | Liquid |
|------|--------|

| | |
|--------|---------------|
| Buffer | PBS, 0.1% SDS |
|--------|---------------|

| | |
|--------------|-----------------|
| Preservative | No Preservative |
|--------------|-----------------|

| | |
|---------|---|
| Storage | Store as concentrated solution. Centrifuge briefly prior to opening vial. Aliquot and store at -20°C or below. Avoid multiple freeze-thaw cycles. |
|---------|---|

| | |
|---------------|--|
| Concentration | Batch dependent (Please refer to the vial label for the specific concentration.) |
|---------------|--|

| | |
|-----------------|--|
| Region/Sequence | N-terminal His tagged full length protein (Met removed) of NP_002515 |
|-----------------|--|

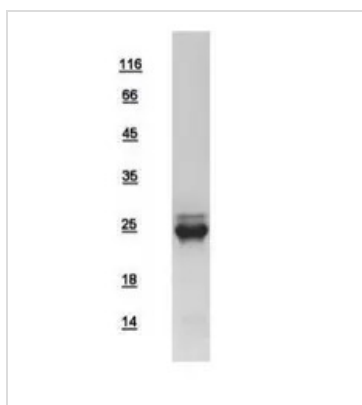
| | |
|-------------------|---------|
| Expression System | E. coli |
|-------------------|---------|

| | |
|--------|------|
| Purity | >90% |
|--------|------|

| | |
|-------------|--------------|
| Conjugation | Unconjugated |
|-------------|--------------|

| | |
|------|---|
| Note | For In vitro laboratory use only. Not for any clinical, therapeutic, or diagnostic use in humans or animals. Not for animal or human consumption. |
|------|---|

DATA IMAGES



GTX108598-pro Image

10µg of GTX108598-pro N-Ras recombinant protein analyzed using SDS-PAGE and stained with coomassie blue and captured by black and white camera.



For full product information, images and publications, please visit our [website](https://www.genetex.com).