

RASGRP2 antibody

Cat. No. GTX108616

Host	Rabbit
Clonality	Polyclonal
Isotype	IgG
Applications	WB, IHC-P, IP
Reactivity	Human, Mouse

References (7)

Package

100 µl, 25 µl

Applications

Application Note

*Optimal dilutions/concentrations should be determined by the researcher.

Suggested dilution	Recommended dilution
WB	1:500-1:3000
IHC-P	1:100-1:1000
IP	1:100-1:500

Not tested in other applications.

Calculated MW 69 kDa. ([Note](#))

Properties

Form	Liquid
Buffer	0.1M Tris, 0.1M Glycine, 10% Glycerol
Preservative	0.01% Thimerosal
Storage	Store as concentrated solution. Centrifuge briefly prior to opening vial. For short-term storage (1-2 weeks), store at 4°C. For long-term storage, aliquot and store at -20°C or below. Avoid multiple freeze-thaw cycles.
Concentration	1 mg/ml (Please refer to the vial label for the specific concentration.)
Immunogen	Recombinant protein encompassing a sequence within the center region of human RASGRP2. The exact sequence is proprietary.
Purification	Purified by antigen-affinity chromatography.
Conjugation	Unconjugated

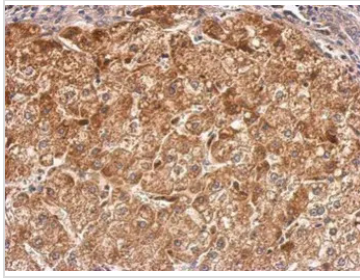
Note

For laboratory research use only. Not for any clinical, therapeutic, or diagnostic use in humans or animals. Not for animal or human consumption.

Purchasers shall not, and agree not to enable third parties to, analyze, copy, reverse engineer or otherwise attempt to determine the structure or sequence of the product.



For full product information, images and publications, please visit our [website](#).

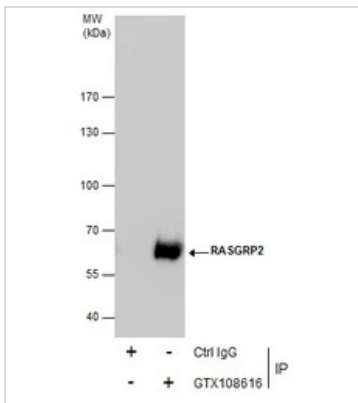
DATA IMAGES

GTx108616 IHC-P Image

RASGRP2 antibody detects RASGRP2 protein at cytosol on human hepatoma by immunohistochemical analysis.

Sample: Paraffin-embedded hepatoma.

RASGRP2 antibody (GTx108616) dilution: 1:200.

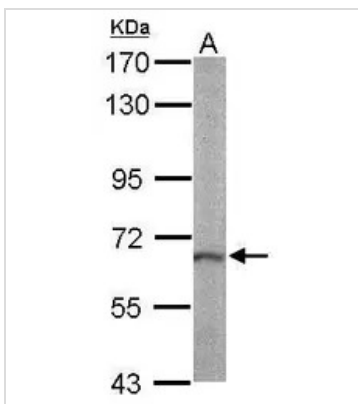
Antigen Retrieval: Trilogy™ (EDTA based, pH 8.0) buffer, 15min


GTx108616 IP Image

Immunoprecipitation of RASGRP2 protein from Raji whole cell extracts using 5 µg of RASGRP2 antibody (GTx108616).

Western blot analysis was performed using RASGRP2 antibody (GTx108616).

EasyBlot anti-Rabbit IgG (GTx221666-01) was used as a secondary reagent.


GTx108616 WB Image

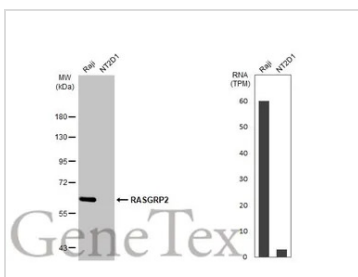
Sample (50 µg of whole cell lysate)

A: mouse liver

7.5% SDS PAGE

GTx108616 diluted at 1:1000

The HRP-conjugated anti-rabbit IgG antibody (GTx213110-01) was used to detect the primary antibody.


GTx108616 WB Image

Various whole cell extracts (30 µg) were separated by 7.5% SDS-PAGE, and the membrane was blotted with RASGRP2 antibody (GTx108616) diluted at 1:1000. The HRP-conjugated anti-rabbit IgG antibody (GTx213110-01) was used to detect the primary antibody. Corresponding RNA expression data for the same cell lines are based on Human Protein Atlas program.



For full product information, images and publications, please visit our [website](https://www.genetex.com).