

Cyclin D1 antibody [N1C3]

Cat. No. GTX108624

| | |
|---------------------|--|
| Host | Rabbit |
| Clonality | Polyclonal |
| Isotype | IgG |
| Applications | WB, ICC/IF, IHC-P, IP, ELISA, Sandwich ELISA |
| Reactivity | Human, Rat, Cat, Dog |

References (32)

★★★★★ Review (3)

Package

100 µl, 25 µl

Applications

Application Note

*Optimal dilutions/concentrations should be determined by the researcher.

| Suggested dilution | Recommended dilution |
|--------------------|----------------------|
| WB | 1:500-1:3000 |
| ICC/IF | 1:100-1:1000 |
| IHC-P | Assay dependent |
| IP | 1:100-1:500 |
| ELISA | 1:1000-1:10000 |
| Sandwich ELISA | Assay dependent |

Note : Capture : GTX634347, Detection: GTX108624

Not tested in other applications.

Calculated MW 34 kDa. ([Note](#))**Product Note** IP/MS validation is based on published data (PMID: 30377392).

Properties

| | |
|----------------------|--|
| Form | Liquid |
| Buffer | PBS, 20% Glycerol |
| Preservative | 0.01% Thimerosal |
| Storage | Store as concentrated solution. Centrifuge briefly prior to opening vial. For short-term storage (1-2 weeks), store at 4°C. For long-term storage, aliquot and store at -20°C or below. Avoid multiple freeze-thaw cycles. |
| Concentration | 1 mg/ml (Please refer to the vial label for the specific concentration.) |
| Immunogen | Full length human Cyclin D1 Recombinant protein. |
| Purification | Purified by antigen-affinity chromatography. |

For full product information, images and publications, please visit our [website](#).

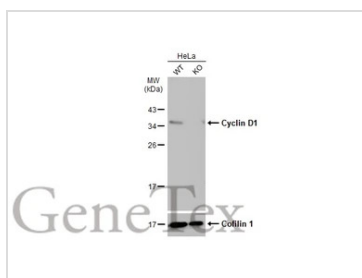
Conjugation

Unconjugated

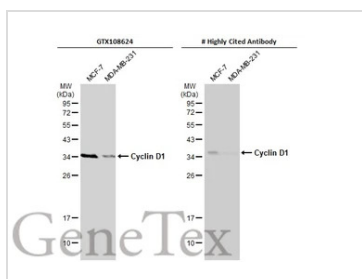
Note

For laboratory research use only. Not for any clinical, therapeutic, or diagnostic use in humans or animals. Not for animal or human consumption.

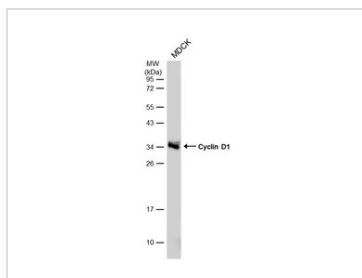
Purchasers shall not, and agree not to enable third parties to, analyze, copy, reverse engineer or otherwise attempt to determine the structure or sequence of the product.

DATA IMAGES

GTX108624 WB Image

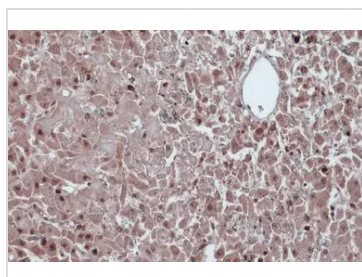
Wild-type (WT) and Cyclin D1 knockout (KO) HeLa cell extracts (30 µg) were separated by 12% SDS-PAGE, and the membrane was blotted with Cyclin D1 antibody [N1C3] (GTX108624) diluted at 1:1000. The HRP-conjugated anti-rabbit IgG antibody (GTX213110-01) was used to detect the primary antibody.


GTX108624 WB Image

Various whole cell extracts (30 µg) were separated by 12% SDS-PAGE, and the membrane was blotted with Cyclin D1 antibody [N1C3] (GTX108624) diluted at 1:500. The HRP-conjugated anti-rabbit IgG antibody (GTX213110-01) was used to detect the primary antibody.


GTX108624 WB Image

Whole cell extract (30 µg) was separated by 12% SDS-PAGE, and the membrane was blotted with Cyclin D1 antibody (GTX108624) diluted at 1:5000. The HRP-conjugated anti-rabbit IgG antibody (GTX213110-01) was used to detect the primary antibody, and the signal was developed with Trident ECL plus-Enhanced.


GTX108624 IHC-P Image

Cyclin D1 antibody detects Cyclin D1 protein at cytoplasm and nucleus by immunohistochemical analysis. Sample: Paraffin-embedded cat liver.

Cyclin D1 stained by Cyclin D1 antibody (GTX108624) diluted at 1:500.

Antigen Retrieval: Citrate buffer, pH 6.0, 15 min



For full product information, images and publications, please visit our [website](https://www.genetex.com).