

Fibrinogen gamma antibody

Cat. No. GTX108640

Host	Rabbit
Clonality	Polyclonal
Isotype	IgG
Applications	WB, ICC/IF, IHC-P, IP
Reactivity	Human, Mouse, Rat, Bovine

References (7)

★★★★★ Review (1)

Package

100 µl, 25 µl

Applications

Application Note

*Optimal dilutions/concentrations should be determined by the researcher.

Suggested dilution	Recommended dilution
WB	1:500-1:20000
ICC/IF	1:100-1:1000
IHC-P	1:100-1:1000
IP	1:100-1:500

Not tested in other applications.

Calculated MW 52 kDa. ([Note](#))

Properties

Form	Liquid
Buffer	PBS, 20% Glycerol
Preservative	0.025% ProClin 300
Storage	Store as concentrated solution. Centrifuge briefly prior to opening vial. For short-term storage (1-2 weeks), store at 4°C. For long-term storage, aliquot and store at -20°C or below. Avoid multiple freeze-thaw cycles.
Concentration	1.77 mg/ml (Please refer to the vial label for the specific concentration.)
Immunogen	Recombinant protein encompassing a sequence within the center region of human Fibrinogen gamma. The exact sequence is proprietary.
Purification	Purified by antigen-affinity chromatography.
Conjugation	Unconjugated

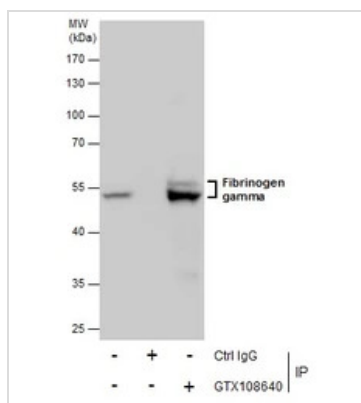
For full product information, images and publications, please visit our [website](#).

For laboratory research use only. Not for any clinical, therapeutic, or diagnostic use in humans or animals. Not for animal or human consumption.

Note

Purchasers shall not, and agree not to enable third parties to, analyze, copy, reverse engineer or otherwise attempt to determine the structure or sequence of the product.

DATA IMAGES

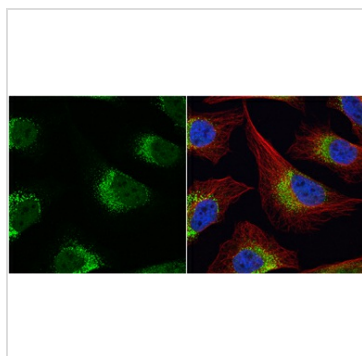


GTX108640 IP Image

Immunoprecipitation of Fibrinogen gamma protein from HepG2 whole cell extracts using 5 µg of Fibrinogen gamma antibody (GTX108640).

Western blot analysis was performed using Fibrinogen gamma antibody (GTX108640).

EasyBlot anti-Rabbit IgG (GTX221666-01) was used as a secondary reagent.



GTX108640 ICC/IF Image

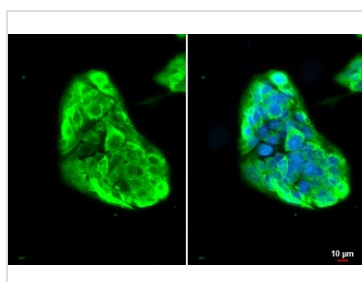
Fibrinogen gamma antibody detects Fibrinogen gamma protein at cytoplasm by immunofluorescent analysis.

Sample: HeLa cells were fixed in 4% paraformaldehyde at RT for 15 min.

Green: Fibrinogen gamma protein stained by Fibrinogen gamma antibody (GTX108640) diluted at 1:500.

Red: alpha Tubulin, a cytoskeleton marker, stained by alpha Tubulin antibody [B-5-1-2] (GTX11304) diluted at 1:10000.

Blue: Hoechst 33342 staining.



GTX108640 ICC/IF Image

Fibrinogen gamma antibody detects Fibrinogen gamma protein at cytoplasm by immunofluorescent analysis.

Sample: HepG2 cells were fixed in 4% paraformaldehyde at RT for 15 min.

Green: Fibrinogen gamma stained by Fibrinogen gamma antibody (GTX108640) diluted at 1:500.

Blue: Fluoroshield with DAPI (GTX30920).

Scale bar= 10µm.



For full product information, images and publications, please visit our [website](https://www.genetex.com).