

CD3 epsilon antibody [CA-3]

Cat. No. GTX10869

Host	Mouse
Clonality	Monoclonal
Isotype	IgG1
Applications	ICC/IF, IHC-Fr, FCM
Reactivity	Human

Package
100 µg

Applications

Application Note

*Optimal dilutions/concentrations should be determined by the researcher.

Suggested dilution	Recommended dilution
ICC/IF	0.5-1µg/ml
IHC-Fr	1µg/ml
FCM	1-3µg/1x10 ⁶ cells

Not tested in other applications.

Properties

Form	Liquid
Buffer	Ascites, 1.2% Sodium acetate, 2mg BSA
Preservative	0.01mg Sodium azide
Storage	Store as concentrated solution. Centrifuge briefly prior to opening vial. For short-term storage (1-2 weeks), store at 4°C. For long-term storage, aliquot and store at -20°C or below. Avoid multiple freeze-thaw cycles.
Immunogen	Human thymocytes followed by Sezary T cells.
Purification	Unpurified
Conjugation	Unconjugated

Note

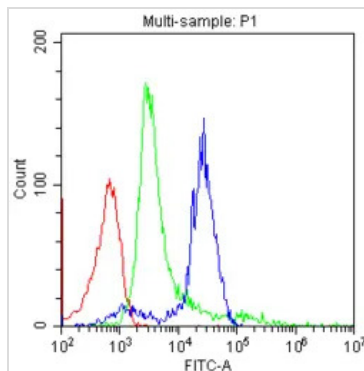
For laboratory research use only. Not for any clinical, therapeutic, or diagnostic use in humans or animals. Not for animal or human consumption.

Purchasers shall not, and agree not to enable third parties to, analyze, copy, reverse engineer or otherwise attempt to determine the structure or sequence of the product.



For full product information, images and publications, please visit our [website](#).

DATA IMAGES



GTX10869 FCM Image

FACS analysis of human PBMC cells using GTX10869 CD3 epsilon antibody [CA-3].

Blue : Primary antibody

Green : Isotype control

Red : Cell only control

Antibody amount : 1 μ g/1x10⁶ cells for 30 min at 20°C



For full product information, images and publications, please visit our [website](#).