

TdT antibody [C1C3]

Cat. No. GTX108697

Host	Rabbit
Clonality	Polyclonal
Isotype	IgG
Applications	WB
Reactivity	Human

Package
100 µl, 25 µl

Applications

Application Note

*Optimal dilutions/concentrations should be determined by the researcher.

Suggested dilution	Recommended dilution
WB	1:500-1:10000

Not tested in other applications.

Calculated MW 59 kDa. ([Note](#))

Properties

Form	Liquid
Buffer	PBS, 20% Glycerol
Preservative	0.025% ProClin 300
Storage	Store as concentrated solution. Centrifuge briefly prior to opening vial. For short-term storage (1-2 weeks), store at 4°C. For long-term storage, aliquot and store at -20°C or below. Avoid multiple freeze-thaw cycles.
Concentration	1 mg/ml (Please refer to the vial label for the specific concentration.)
Immunogen	Recombinant protein encompassing a sequence within the C-terminus region of human TdT. The exact sequence is proprietary.
Purification	Purified by antigen-affinity chromatography.
Conjugation	Unconjugated

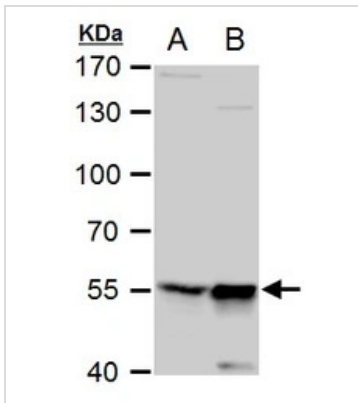
Note

For laboratory research use only. Not for any clinical, therapeutic, or diagnostic use in humans or animals. Not for animal or human consumption.

Purchasers shall not, and agree not to enable third parties to, analyze, copy, reverse engineer or otherwise attempt to determine the structure or sequence of the product.



For full product information, images and publications, please visit our [website](#).

DATA IMAGES

GTX108697 WB Image

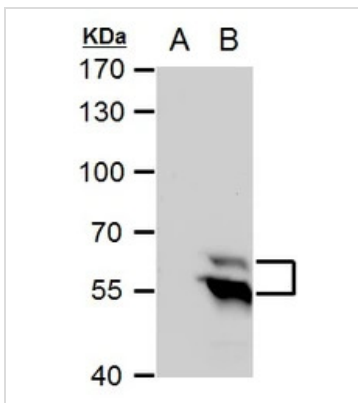
TdT antibody [C1C3] detects TdT protein by western blot analysis.

A. 30 μ g Jurkat whole cell extract

B. 30 μ g Jurkat nuclear extract

7.5 % SDS-PAGE

TdT antibody [C1C3] (GTX108697) dilution: 1:500


GTX108697 WB Image

TdT antibody [C1C3] detects TdT protein by western blot analysis.

A. 30 μ g 293T whole cell extract

B. 30 μ g whole cell extract of human DNMT-transfected 293T cells

7.5 % SDS-PAGE

TdT antibody [C1C3] (GTX108697) dilution: 1:5000



For full product information, images and publications, please visit our [website](https://www.genetex.com).