

IL1 Receptor 2 antibody [N3C3]

Cat. No. GTX108702

Host	Rabbit
Clonality	Polyclonal
Isotype	IgG
Application	WB, ICC/IF, IHC-P
Reactivity	Human, Mouse, Rat

Reference (1)

Package

100 µl, 25 µl

APPLICATION

Application Note

*Optimal dilutions/concentrations should be determined by the researcher.

Suggested dilution	Recommended dilution
WB	1:500-1:3000
ICC/IF	1:100-1:1000
IHC-P	1:100-1:1000

Not tested in other applications.

Calculated MW 45 kDa. ([Note](#))

PROPERTIES

Form	Liquid
Buffer	0.1M Tris, 0.1M Glycine, 10% Glycerol
Preservative	0.01% Thimerosal
Storage	Store as concentrated solution. Centrifuge briefly prior to opening vial. For short-term storage (1-2 weeks), store at 4°C. For long-term storage, aliquot and store at -20°C or below. Avoid multiple freeze-thaw cycles.
Concentration	1 mg/ml (Please refer to the vial label for the specific concentration.)
Immunogen	Recombinant protein encompassing a sequence within the center region of human IL1 Receptor 2. The exact sequence is proprietary.
Purification	Purified by antigen-affinity chromatography.
Conjugation	Unconjugated

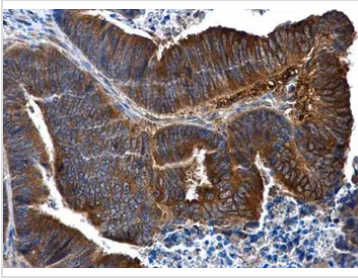
Note

For laboratory research use only. Not for any clinical, therapeutic, or diagnostic use in humans or animals. Not for animal or human consumption.

Purchasers shall not, and agree not to enable third parties to, analyze, copy, reverse engineer or otherwise attempt to determine the structure or sequence of the product.



For full product information, images and publications, please visit our [website](#).

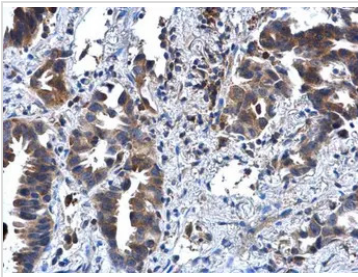
DATA IMAGES

GTx108702 IHC-P Image

IL1 Receptor 2 antibody [N3C3] detects IL1 Receptor 2 protein at cytoplasm in human colon cancer by immunohistochemical analysis.

Sample: Paraffin-embedded human colon cancer.

IL1 Receptor 2 antibody [N3C3] (GTx108702) diluted at 1:500.

Antigen Retrieval: Citrate buffer, pH 6.0, 15 min

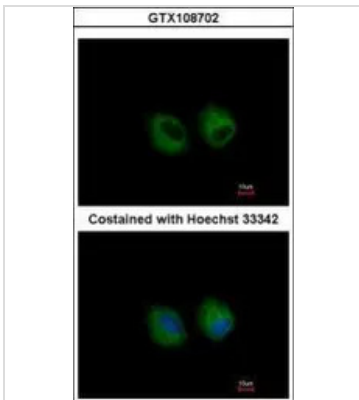

GTx108702 IHC-P Image

IL1 Receptor 2 antibody [N3C3] detects IL1 Receptor 2 protein at cytoplasm in human lung cancer by immunohistochemical analysis.

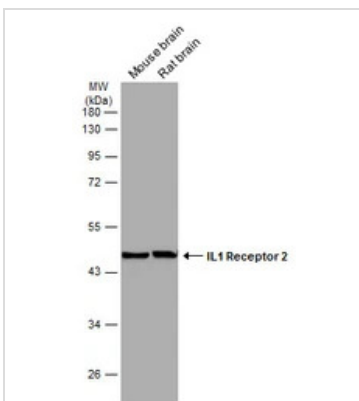
Sample: Paraffin-embedded human lung cancer.

IL1 Receptor 2 antibody [N3C3] (GTx108702) diluted at 1:500.

Antigen Retrieval: Citrate buffer, pH 6.0, 15 min


GTx108702 ICC/IF Image

Immunofluorescence analysis of methanol-fixed A549, using IL1 Receptor 2 (GTx108702) antibody at 1:500 dilution.


GTx108702 WB Image

Various tissue extracts (50 µg) were separated by 10% SDS-PAGE, and the membrane was blotted with IL1 Receptor 2 antibody [N3C3] (GTx108702) diluted at 1:1000. The HRP-conjugated anti-rabbit IgG antibody (GTx213110-01) was used to detect the primary antibody.



For full product information, images and publications, please visit our [website](https://www.genetex.com).