

TrxR1 antibody [N3C2], Internal

Cat. No. GTX108727

Host	Rabbit
Clonality	Polyclonal
Isotype	IgG
Applications	WB, ICC/IF, IHC-P
Reactivity	Human, Mouse, Rat

References (9)

Package

100 µl, 25 µl

Applications

Application Note

*Optimal dilutions/concentrations should be determined by the researcher.

Suggested dilution	Recommended dilution
WB	1:500-1:3000
ICC/IF	1:100-1:1000
IHC-P	1:100-1:1000

Not tested in other applications.

Calculated MW 71 kDa. ([Note](#))

Properties

Form	Liquid
Buffer	0.1M Tris, 0.1M Glycine, 10% Glycerol
Preservative	0.01% Thimerosal
Storage	Store as concentrated solution. Centrifuge briefly prior to opening vial. For short-term storage (1-2 weeks), store at 4°C. For long-term storage, aliquot and store at -20°C or below. Avoid multiple freeze-thaw cycles.
Concentration	1 mg/ml (Please refer to the vial label for the specific concentration.)
Immunogen	Recombinant protein encompassing a sequence within the center region of human TrxR1. The exact sequence is proprietary.
Purification	Purified by antigen-affinity chromatography.
Conjugation	Unconjugated

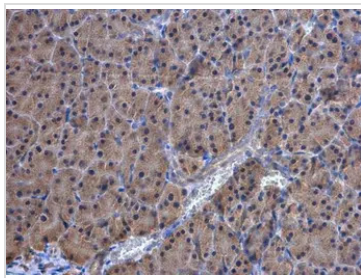
Note

For laboratory research use only. Not for any clinical, therapeutic, or diagnostic use in humans or animals. Not for animal or human consumption.

Purchasers shall not, and agree not to enable third parties to, analyze, copy, reverse engineer or otherwise attempt to determine the structure or sequence of the product.

For full product information, images and publications, please visit our [website](#).

DATA IMAGES



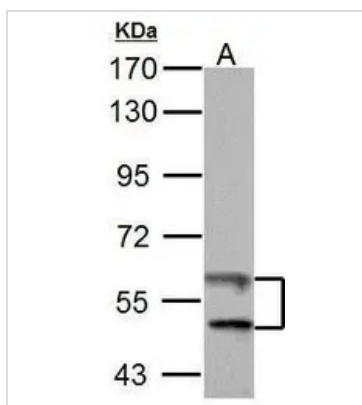
GTx108727 IHC-P Image

TrxR1 antibody [N3C2], Internal detects TrxR1 protein at cytoplasm and nucleus in mouse pancreas by immunohistochemical analysis.

Sample: Paraffin-embedded mouse pancreas.

TrxR1 antibody [N3C2], Internal (GTx108727) diluted at 1:500.

Antigen Retrieval: Citrate buffer, pH 6.0, 15 min



GTx108727 WB Image

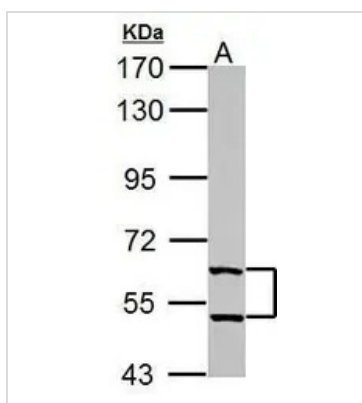
TrxR1 antibody [N3C2], Internal detects TXNRD1 protein by western blot analysis.

A. 50 µg Rat brain lysate/extract

7.5% SDS-PAGE

TrxR1 antibody [N3C2], Internal (GTx108727) dilution: 1:1000

The HRP-conjugated anti-rabbit IgG antibody (GTx213110-01) was used to detect the primary antibody.



GTx108727 WB Image

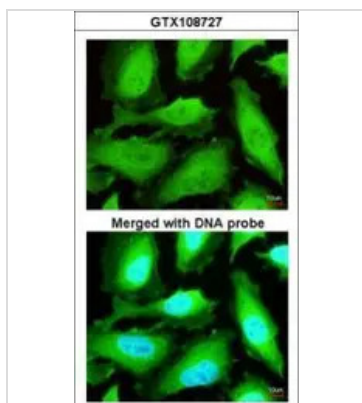
TrxR1 antibody [N3C2], Internal detects TXNRD1 protein by western blot analysis.

A. 50 µg mouse brain lysate/extract

7.5% SDS-PAGE

TrxR1 antibody [N3C2], Internal (GTx108727) dilution: 1:1000

The HRP-conjugated anti-rabbit IgG antibody (GTx213110-01) was used to detect the primary antibody.



GTx108727 ICC/IF Image

Immunofluorescence analysis of paraformaldehyde-fixed HeLa, using TrxR1 (GTx108727) antibody at 1:200 dilution.



For full product information, images and publications, please visit our [website](https://www.genetex.com).