

Casein Kinase 1 delta antibody

Cat. No. GTX10877

Host	Goat
Clonality	Polyclonal
Isotype	IgG
Applications	IHC-P, ELISA
Reactivity	Human

Package

50 µl

Applications

Application Note

*Optimal dilutions/concentrations should be determined by the researcher.

Suggested dilution	Recommended dilution
IHC-P	1/200
ELISA	Assay dependent

Note : This product requires antigen retrieval using heat treatment prior to staining of paraffin sections.

Not tested in other applications.

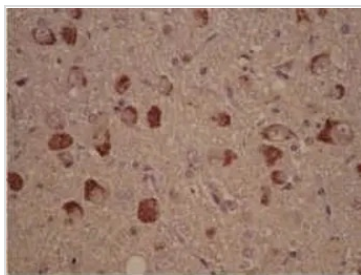
Properties

Form	Liquid
Buffer	Serum
Preservative	0.1% Sodium azide
Storage	Store as concentrated solution. Centrifuge briefly prior to opening vial. For short-term storage (1-2 weeks), store at 4°C. For long-term storage, aliquot and store at -20°C or below. Avoid multiple freeze-thaw cycles.
Immunogen	Synthetic peptide corresponding to amino acids 310-327 of human casein kinase 1 delta
Purification	Serum
Conjugation	Unconjugated
Note	For laboratory research use only. Not for any clinical, therapeutic, or diagnostic use in humans or animals. Not for animal or human consumption. Purchasers shall not, and agree not to enable third parties to, analyze, copy, reverse engineer or otherwise attempt to determine the structure or sequence of the product.



For full product information, images and publications, please visit our [website](#).

DATA IMAGES



GTX10877 IHC-P Image

IHC-P analysis of granular lesions in the hippocampus of a patient with Alzheimer's disease tissue using GTX10877 Casein Kinase 1 delta antibody.



For full product information, images and publications, please visit our [website](#).