

GSTM5 antibody

Cat. No. GTX108776

Host	Rabbit
Clonality	Polyclonal
Isotype	IgG
Applications	WB, ICC/IF, IHC-P
Reactivity	Human, Mouse, Rat

References (2)

Package

100 µl, 25 µl

Applications

Application Note

*Optimal dilutions/concentrations should be determined by the researcher.

Suggested dilution	Recommended dilution
WB	1:5000-1:20000
ICC/IF	1:100-1:1000
IHC-P	1:100-1:1000

Not tested in other applications.

Calculated MW 26 kDa. ([Note](#))

Properties

Form	Liquid
Buffer	0.1M Tris, 0.1M Glycine, 10% Glycerol
Preservative	0.01% Thimerosal
Storage	Store as concentrated solution. Centrifuge briefly prior to opening vial. For short-term storage (1-2 weeks), store at 4°C. For long-term storage, aliquot and store at -20°C or below. Avoid multiple freeze-thaw cycles.
Concentration	1 mg/ml (Please refer to the vial label for the specific concentration.)
Immunogen	Full length human GSTM5 Recombinant protein.
Purification	Purified by antigen-affinity chromatography.
Conjugation	Unconjugated

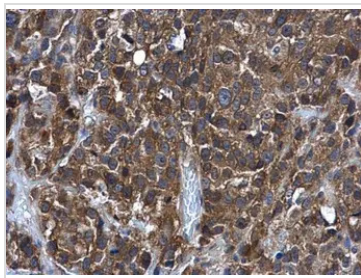
Note

For laboratory research use only. Not for any clinical, therapeutic, or diagnostic use in humans or animals. Not for animal or human consumption.

Purchasers shall not, and agree not to enable third parties to, analyze, copy, reverse engineer or otherwise attempt to determine the structure or sequence of the product.

For full product information, images and publications, please visit our [website](#).

DATA IMAGES

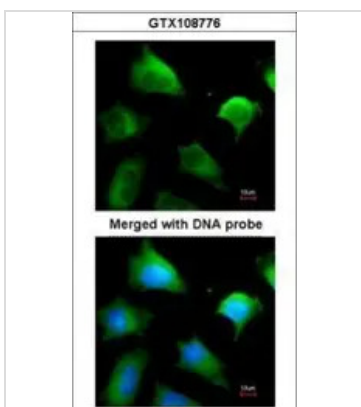


GTX108776 IHC-P Image

GSTM5 antibody detects GSTM5 protein at cytoplasm in human cervical cancer by immunohistochemical analysis.

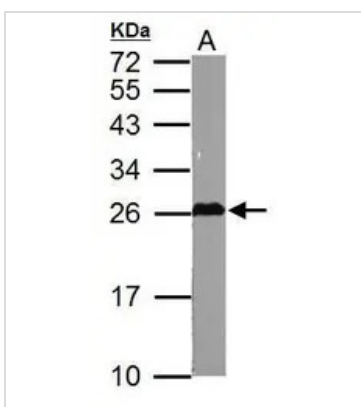
Sample: Paraffin-embedded human cervical cancer.
GSTM5 antibody (GTX108776) diluted at 1:500.

Antigen Retrieval: Citrate buffer, pH 6.0, 15 min



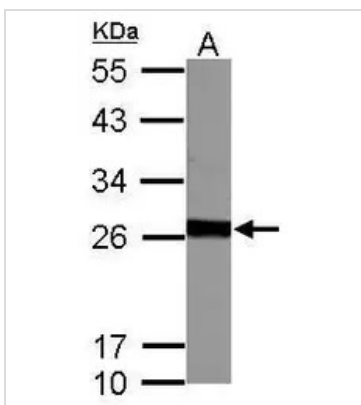
GTX108776 ICC/IF Image

Immunofluorescence analysis of paraformaldehyde-fixed HeLa, using GST Mu5(GTX108776) antibody at 1:200 dilution.



GTX108776 WB Image

Sample (50 ug of whole cell lysate)
A: mouse testis
12% SDS PAGE
GTX108776 diluted at 1:10000



GTX108776 WB Image

Sample (50 ug of whole cell lysate)
A: rat testis
12% SDS PAGE
GTX108776 diluted at 1:10000



For full product information, images and publications, please visit our [website](#).