

## C17orf75 antibody [N1C1]

Cat. No. GTX108779

|              |                   |
|--------------|-------------------|
| Host         | Rabbit            |
| Clonality    | Polyclonal        |
| Isotype      | IgG               |
| Applications | WB, IHC-P, IHC-Fr |
| Reactivity   | Human, Mouse      |

Package  
100 µl, 25 µl

## Applications

## Application Note

\*Optimal dilutions/concentrations should be determined by the researcher.

| Suggested dilution | Recommended dilution |
|--------------------|----------------------|
| WB                 | 1:500-1:3000         |
| IHC-P              | 1:100-1:1000         |
| IHC-Fr             | 1:100-1:1000         |

Not tested in other applications.

Calculated MW 45 kDa. ( [Note](#) )

## Properties

|               |  |
|---------------|--|
| Form          | Liquid   |
| Buffer        | 0.1M Tris, 0.1M Glycine, 10% Glycerol  |
| Preservative  | 0.01% Thimerosal   |
| Storage       | Store as concentrated solution. Centrifuge briefly prior to opening vial. For short-term storage (1-2 weeks), store at 4°C. For long-term storage, aliquot and store at -20°C or below. Avoid multiple freeze-thaw cycles. |
| Concentration | 0.8 mg/ml (Please refer to the vial label for the specific concentration.)   |
| Immunogen     | Recombinant protein encompassing a sequence within the center region of human C17orf75. The exact sequence is proprietary.   |
| Purification  | Purified by antigen-affinity chromatography.   |
| Conjugation   | Unconjugated   |

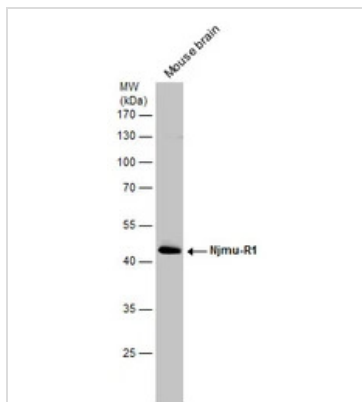
## Note

For laboratory research use only. Not for any clinical, therapeutic, or diagnostic use in humans or animals. Not for animal or human consumption.

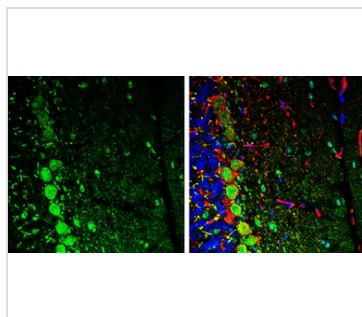
Purchasers shall not, and agree not to enable third parties to, analyze, copy, reverse engineer or otherwise attempt to determine the structure or sequence of the product.



For full product information, images and publications, please visit our [website](#).

**DATA IMAGES**

**GTX108779 WB Image**

Mouse tissue extract (50 µg) was separated by 10% SDS-PAGE, and the membrane was blotted with Njmu-R1 antibody [N1C1] (GTX108779) diluted at 1:3000.


**GTX108779 IHC-Fr Image**

Njmu-R1 antibody [N1C1] detects Njmu-R1 Protein expression by immunohistochemical analysis.

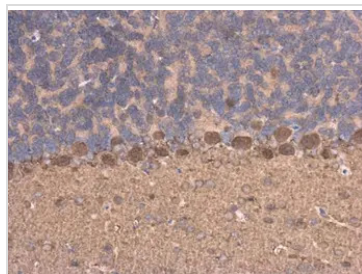
Sample: Frozen-sectioned adult mouse cerebellum.

Green: Njmu-R1 stained by Njmu-R1 antibody [N1C1] (GTX108779) diluted at 1:250.

Red: NF-H, stained by NF-H antibody [GT114] (GTX634289) diluted at 1:500.

Blue: Fluoroshield with DAPI (GTX30920).

Antigen Retrieval: Citrate buffer, pH 6.0, 10 min

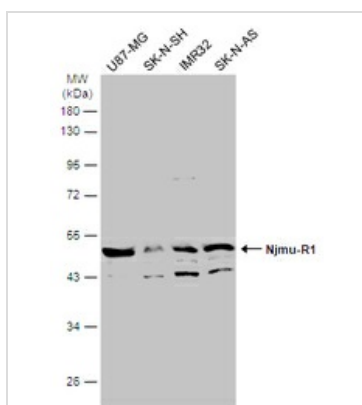

**GTX108779 IHC-P Image**

Njmu-R1 antibody [N1C1] detects Njmu-R1 protein at cytoplasm in mouse brain by immunohistochemical analysis.

Sample: Paraffin-embedded mouse brain.

Njmu-R1 antibody [N1C1] (GTX108779) diluted at 1:500.

Antigen Retrieval: Citrate buffer, pH 6.0, 15 min


**GTX108779 WB Image**

Various whole cell extracts (30 µg) were separated by 10% SDS-PAGE, and the membrane was blotted with Njmu-R1 antibody [N1C1] (GTX108779) diluted at 1:500. The HRP-conjugated anti-rabbit IgG antibody (GTX213110-01) was used to detect the primary antibody.



For full product information, images and publications, please visit our [website](https://www.genetex.com).