

## PHD3 antibody

**Cat. No. GTX10880**

<b>Host</b>	Rabbit
<b>Clonality</b>	Polyclonal
<b>Isotype</b>	IgG
<b>Applications</b>	WB, ICC/IF, IHC-P, IP, ChIP assay
<b>Reactivity</b>	Human, Mouse, Rat, Primate

**Package**  
100 µl

## Applications

**Application Note**

\*Optimal dilutions/concentrations should be determined by the researcher.

Suggested dilution	Recommended dilution
WB	1:500 - 1:2000
ICC/IF	Assay dependent
IHC-P	Assay dependent
IP	1:10 - 1:500
ChIP assay	Assay dependent

Not tested in other applications.

**Calculated MW** 27 kDa. ([Note](#))

## Properties

<b>Form</b>	Liquid
<b>Buffer</b>	PBS
<b>Preservative</b>	0.02% Sodium azide
<b>Storage</b>	Store as concentrated solution. Centrifuge briefly prior to opening vial. For short-term storage (1-2 weeks), store at 4°C. For long-term storage, aliquot and store at -20°C or below. Avoid multiple freeze-thaw cycles.
<b>Concentration</b>	1 mg/ml (Please refer to the vial label for the specific concentration.)
<b>Immunogen</b>	A synthetic peptide made to the C-terminus of humanPHD3/HIF Prolyl Hydroxylase 3. [LocusLink ID 112399]
<b>Purification</b>	Purified by antigen-affinity chromatography
<b>Conjugation</b>	Unconjugated



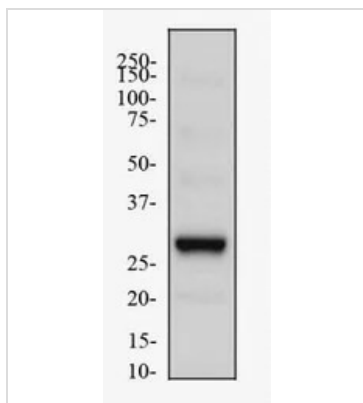
For full product information, images and publications, please visit our [website](#).

For laboratory research use only. Not for any clinical, therapeutic, or diagnostic use in humans or animals. Not for animal or human consumption.

**Note**

Purchasers shall not, and agree not to enable third parties to, analyze, copy, reverse engineer or otherwise attempt to determine the structure or sequence of the product.

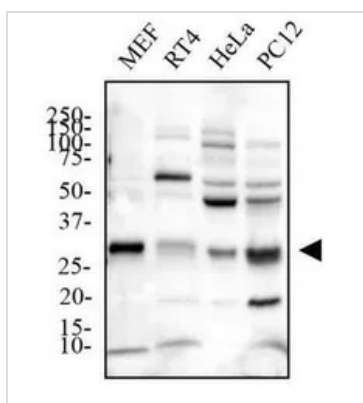
DATA IMAGES



**GTX10880 WB Image**

WB analysis of MEF cell lysate using GTX10880 PHD3 antibody.

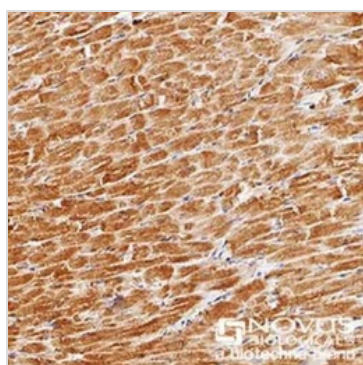
Dilution : 2 µg/ml



**GTX10880 WB Image**

WB analysis of MEF, RT4, HeLa, and PC12 cell lysate using GTX10880 PHD3 antibody.

Dilution : 2 µg/ml



**GTX10880 IHC-P Image**

IHC-P analysis of human liver cancer tissue using GTX10880 PHD3 antibody.

Dilution : 1:3000



For full product information, images and publications, please visit our [website](#).