

## SMAD5 antibody

Cat. No. GTX108917

Host	Rabbit
Clonality	Polyclonal
Isotype	IgG
Applications	WB, IHC-P
Reactivity	Human, Mouse, Rat, Zebrafish

References ( 2 )

Package

100 µl, 25 µl

## Applications

## Application Note

\*Optimal dilutions/concentrations should be determined by the researcher.

Suggested dilution	Recommended dilution
WB	1:500-1:3000
IHC-P	Assay dependent

Not tested in other applications.

Calculated MW 52 kDa. ( [Note](#) )

## Properties

Form	Liquid
Buffer	PBS, 1% BSA, 20% Glycerol
Preservative	0.01% Thimerosal
Storage	Store as concentrated solution. Centrifuge briefly prior to opening vial. For short-term storage (1-2 weeks), store at 4°C. For long-term storage, aliquot and store at -20°C or below. Avoid multiple freeze-thaw cycles.
Concentration	1 mg/ml (Please refer to the vial label for the specific concentration.)
Immunogen	Recombinant protein encompassing a sequence within the center region of human SMAD5. The exact sequence is proprietary.
Purification	Purified by antigen-affinity chromatography.
Conjugation	Unconjugated

## Note

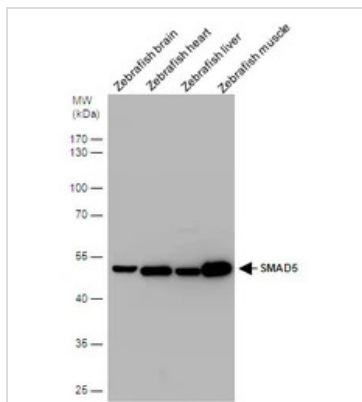
For laboratory research use only. Not for any clinical, therapeutic, or diagnostic use in humans or animals. Not for animal or human consumption.

Purchasers shall not, and agree not to enable third parties to, analyze, copy, reverse engineer or otherwise attempt to determine the structure or sequence of the product.



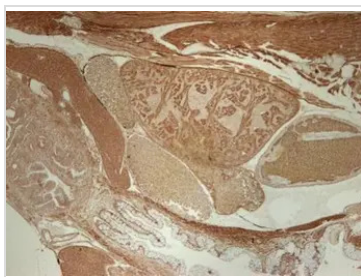
For full product information, images and publications, please visit our [website](#).

DATA IMAGES



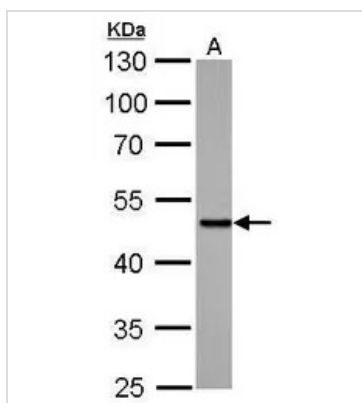
**GTX108917 WB Image**

SMAD5 antibody detects smad5 protein by western blot analysis. Various zebrafish tissue extracts (30 µg) were separated by 10 % SDS-PAGE, and the membrane was blotted with SMAD5 antibody (GTX108917) at a dilution of 1:1000.



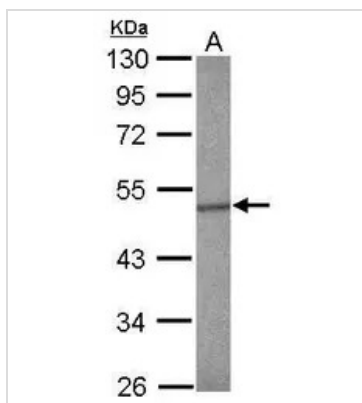
**GTX108917 IHC-P Image**

Immunohistochemical analysis of paraffin-embedded zebrafish tissue, using SMAD5 antibody (GTX108917) at 1:300 dilution.



**GTX108917 WB Image**

SMAD5 antibody detects SMAD5 protein by Western blot analysis.  
A. 30 µg Rat2 whole cell lysate/extract  
10 % SDS-PAGE  
SMAD5 antibody (GTX108917) dilution: 1:1000



**GTX108917 WB Image**

Sample (30 ug of whole cell lysate)  
A: HeLa  
10% SDS PAGE  
GTX108917 diluted at 1:1000



For full product information, images and publications, please visit our [website](https://www.genetex.com).