

PI3 kinase p150 antibody [C1C3]

Cat. No. GTX108953

| | |
|--------------------|--------------|
| Host | Rabbit |
| Clonality | Polyclonal |
| Isotype | IgG |
| Application | WB, IP |
| Reactivity | Human, Mouse |

Reference (3)
 Package
 100 µl, 25 µl

APPLICATION

Application Note

*Optimal dilutions/concentrations should be determined by the researcher.

| Suggested dilution | Recommended dilution |
|--------------------|----------------------|
| WB | 1:500-1:3000 |
| IP | 1:100-1:500 |

Not tested in other applications.

Calculated MW 153 kDa. ([Note](#))

PROPERTIES

| | |
|----------------------|--|
| Form | Liquid |
| Buffer | 0.1M Tris, 0.1M Glycine, 10% Glycerol |
| Preservative | 0.01% Thimerosal |
| Storage | Store as concentrated solution. Centrifuge briefly prior to opening vial. For short-term storage (1-2 weeks), store at 4°C. For long-term storage, aliquot and store at -20°C or below. Avoid multiple freeze-thaw cycles. |
| Concentration | 1 mg/ml (Please refer to the vial label for the specific concentration.) |
| Immunogen | Recombinant protein encompassing a sequence within the C-terminus region of human PI3 kinase p150. The exact sequence is proprietary. |
| Purification | Purified by antigen-affinity chromatography. |
| Conjugation | Unconjugated |

Note

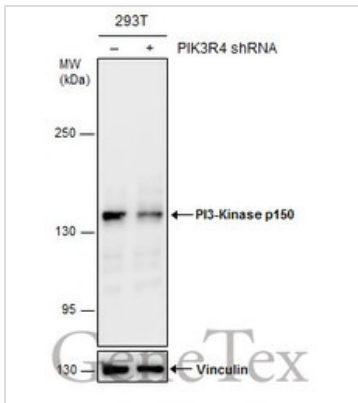
For laboratory research use only. Not for any clinical, therapeutic, or diagnostic use in humans or animals. Not for animal or human consumption.

Purchasers shall not, and agree not to enable third parties to, analyze, copy, reverse engineer or otherwise attempt to determine the structure or sequence of the product.



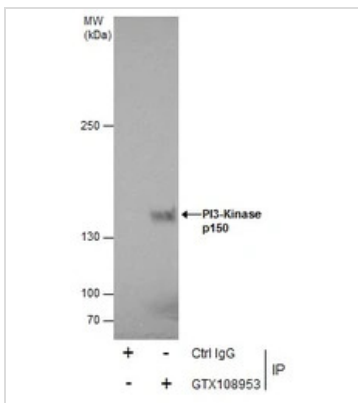
For full product information, images and publications, please visit our [website](#).

DATA IMAGES



GTX108953 WB Image

Non-transfected (–) and transfected (+) 293T whole cell extracts (30 µg) were separated by 5% SDS-PAGE, and the membrane was blotted with PI3-Kinase p150 antibody [C1C3] (GTX108953) diluted at 1:500.

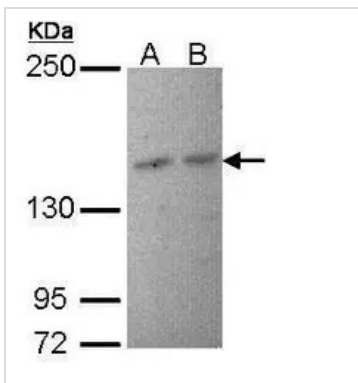


GTX108953 IP Image

Immunoprecipitation of PI3-Kinase p150 protein from HeLa whole cell extracts using 5 µg of PI3-Kinase p150 antibody [C1C3] (GTX108953).

Western blot analysis was performed using PI3-Kinase p150 antibody [C1C3] (GTX108953).

EasyBlot anti-Rabbit IgG (GTX221666-01) was used as a secondary reagent.



GTX108953 WB Image

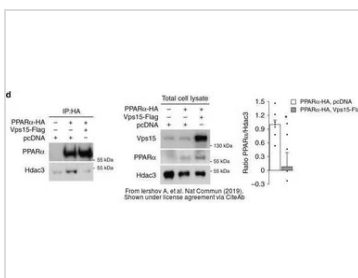
Sample (30 ug of whole cell lysate)

A: Molt-4 (GTX27912)

B: Raji

7.5% SDS PAGE

GTX108953 diluted at 1:1000



GTX108953 WB Image

The data was published in the journal Nat Commun in 2019. [PMID: 30952952](https://pubmed.ncbi.nlm.nih.gov/30952952/)



For full product information, images and publications, please visit our [website](https://www.genetex.com).