

Creatine kinase (muscle) antibody [N2C3]

Cat. No. GTX108969

Host	Rabbit
Clonality	Polyclonal
Isotype	IgG
Applications	WB, ICC/IF, IHC-P, IHC-Wm, IHC
Reactivity	Human, Mouse, Zebrafish, Dog

References (1)

Package

100 µl, 25 µl

Applications

Application Note

*Optimal dilutions/concentrations should be determined by the researcher.

Suggested dilution	Recommended dilution
WB	1:500-1:3000
ICC/IF	Assay dependent
IHC-P	1:100-1:1000
IHC-Wm	Assay dependent
IHC	Assay dependent

Not tested in other applications.

Calculated MW 43 kDa. ([Note](#))

Properties

Form	Liquid
Buffer	0.1M Tris, 0.1M Glycine, 10% Glycerol
Preservative	0.01% Thimerosal
Storage	Store as concentrated solution. Centrifuge briefly prior to opening vial. For short-term storage (1-2 weeks), store at 4°C. For long-term storage, aliquot and store at -20°C or below. Avoid multiple freeze-thaw cycles.
Concentration	1 mg/ml (Please refer to the vial label for the specific concentration.)
Immunogen	Recombinant protein encompassing a sequence within the center region of human Creatine kinase (muscle). The exact sequence is proprietary.
Purification	Purified by antigen-affinity chromatography.
Conjugation	Unconjugated

For full product information, images and publications, please visit our [website](#).

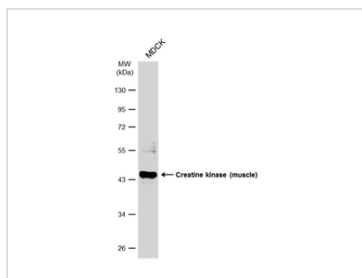
Date 2025 / 12 / 06 Page 1 of 2

For laboratory research use only. Not for any clinical, therapeutic, or diagnostic use in humans or animals. Not for animal or human consumption.

Note

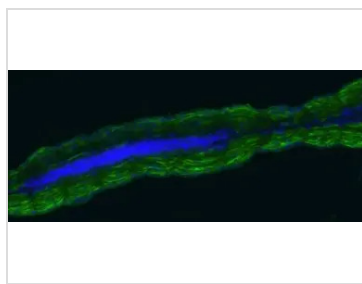
Purchasers shall not, and agree not to enable third parties to, analyze, copy, reverse engineer or otherwise attempt to determine the structure or sequence of the product.

DATA IMAGES



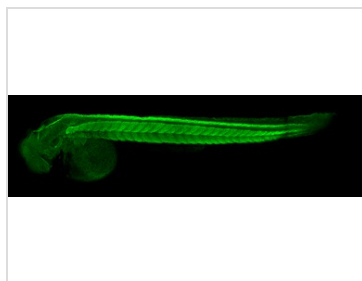
GTx108969 WB Image

Whole cell extract (30 µg) was separated by 10% SDS-PAGE, and the membrane was blotted with Creatine kinase (muscle) antibody (GTx108969) diluted at 1:1000. The HRP-conjugated anti-rabbit IgG antibody (GTx213110-01) was used to detect the primary antibody.



GTx108969 IHC Image

Immunohistochemical analysis of agarose-embedded zebrafish embryo tail section, using Creatine kinase (muscle) antibody [N2C3] (GTx108969) at 1:200 dilution.



GTx108969 IHC-Wm Image

Creatine kinase (muscle) antibody [N2C3] detects Ckma protein on zebrafish by whole mount immunohistochemical analysis.

Sample: 2 days-post-fertilization zebrafish embryo.

Creatine kinase (muscle) antibody [N2C3] (GTx108969) dilution: 1:100.



GTx108969 IHC-P Image

Immunohistochemical analysis of paraffin-embedded zebrafish tissue, using Creatine kinase (muscle) antibody [N2C3] (GTx108969) at 1:300 dilution.



For full product information, images and publications, please visit our [website](https://www.genetex.com).