

CDC6 antibody

Cat. No. GTX108979

Host	Rabbit
Clonality	Polyclonal
Isotype	IgG
Applications	WB, ICC/IF, IHC-P
Reactivity	Human, Mouse, Rat

References (1)

Package

100 µl, 25 µl

Applications

Application Note

*Optimal dilutions/concentrations should be determined by the researcher.

Suggested dilution	Recommended dilution
WB	1:500-1:3000
ICC/IF	1:100-1:1000
IHC-P	1:100-1:1000

Not tested in other applications.

Calculated MW 63 kDa. ([Note](#))

Properties

Form	Liquid
Buffer	PBS, 20% Glycerol
Preservative	0.025% ProClin 300
Storage	Store as concentrated solution. Centrifuge briefly prior to opening vial. For short-term storage (1-2 weeks), store at 4°C. For long-term storage, aliquot and store at -20°C or below. Avoid multiple freeze-thaw cycles.
Concentration	1.36 mg/ml (Please refer to the vial label for the specific concentration.)
Immunogen	Recombinant protein encompassing a sequence within the center region of human CDC6. The exact sequence is proprietary.
Purification	Purified by antigen-affinity chromatography.
Conjugation	Unconjugated

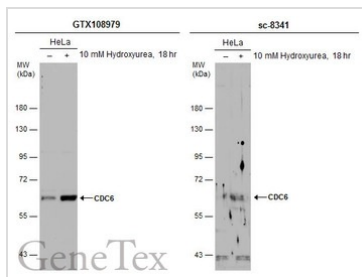
Note

For laboratory research use only. Not for any clinical, therapeutic, or diagnostic use in humans or animals. Not for animal or human consumption.

Purchasers shall not, and agree not to enable third parties to, analyze, copy, reverse engineer or otherwise attempt to determine the structure or sequence of the product.

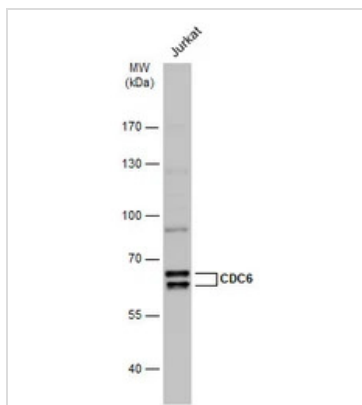


For full product information, images and publications, please visit our [website](#).

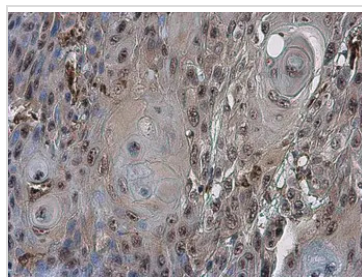
DATA IMAGES

GTKX108979 WB Image

Untreated (–) and treated (+) HeLa whole cell extracts (30 µg) were separated by 7.5% SDS-PAGE, and the membranes were blotted with CDC6 antibody (GTKX108979) diluted at 1:500 and competitor's antibody (sc-8341) diluted at 1:100. The HRP-conjugated anti-rabbit IgG antibody (GTKX213110-01) was used to detect the primary antibody.

*The competitor is not affiliated with GeneTex and does not endorse this product.


GTKX108979 WB Image

Whole cell extract (30 µg) was separated by 7.5% SDS-PAGE, and the membrane was blotted with CDC6 antibody (GTKX108979) diluted at 1:1000. The HRP-conjugated anti-rabbit IgG antibody (GTKX213110-01) was used to detect the primary antibody.

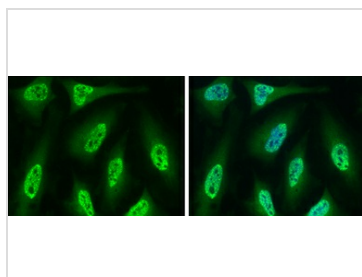

GTKX108979 IHC-P Image

CDC6 antibody detects CDC6 protein at cytoplasm in human oral carcinoma by immunohistochemical analysis.

Sample: Paraffin-embedded human oral carcinoma.

CDC6 antibody (GTKX108979) diluted at 1:500.

Antigen Retrieval: Citrate buffer, pH 6.0, 15 min


GTKX108979 ICC/IF Image

CDC6 antibody detects CDC6 protein at nucleus by immunofluorescent analysis.

Sample: HeLa cells were fixed in 4% paraformaldehyde at RT for 15 min.

Green: CDC6 protein stained by CDC6 antibody (GTKX108979) diluted at 1:500.

Blue: Hoechst 33342 staining.



For full product information, images and publications, please visit our [website](https://www.genetex.com).