

RP105 antibody [N2C1], Internal

Cat. No. GTX109057

Host	Rabbit
Clonality	Polyclonal
Isotype	IgG
Applications	WB, ICC/IF, IHC-P, FCM
Reactivity	Human

References (1)

Package

100 µl, 25 µl

Applications

Application Note

*Optimal dilutions/concentrations should be determined by the researcher.

Suggested dilution	Recommended dilution
WB	1:500-1:3000
ICC/IF	Assay dependent
IHC-P	1:100-1:1000
FCM	1:50-1:200

Not tested in other applications.

Calculated MW 74 kDa. ([Note](#))

Properties

Form	Liquid
Buffer	PBS, 1% BSA, 20% Glycerol
Preservative	0.01% Thimerosal
Storage	Store as concentrated solution. Centrifuge briefly prior to opening vial. For short-term storage (1-2 weeks), store at 4°C. For long-term storage, aliquot and store at -20°C or below. Avoid multiple freeze-thaw cycles.
Concentration	1 mg/ml (Please refer to the vial label for the specific concentration.)
Immunogen	Recombinant protein encompassing a sequence within the Extracellular domain of human RP105. The exact sequence is proprietary.
Purification	Purified by antigen-affinity chromatography.
Conjugation	Unconjugated



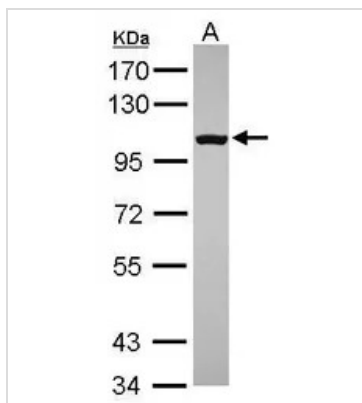
For full product information, images and publications, please visit our [website](#).

For laboratory research use only. Not for any clinical, therapeutic, or diagnostic use in humans or animals. Not for animal or human consumption.

Note

Purchasers shall not, and agree not to enable third parties to, analyze, copy, reverse engineer or otherwise attempt to determine the structure or sequence of the product.

DATA IMAGES



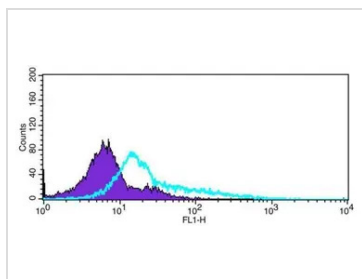
GTX109057 WB Image

Sample (30 ug of whole cell lysate)

A: Jurkat

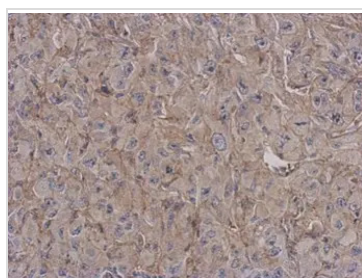
7.5% SDS PAGE

GTX109057 diluted at 1:1000



GTX109057 FCM Image

RP105 antibody [N2C1], Internal Flow cytometry on Jurkat cells fixed in 4% paraformaldehyde at 4°C for 5 min, staining with RP105 (GTX109057) antibody at 1:100 dilution (blue) or rabbit IgG (black).



GTX109057 IHC-P Image

Immunohistochemical analysis of paraffin-embedded Mahlarvu xenograft, using RP105 (GTX109057) antibody at 1:500 dilution.

Antigen Retrieval: Trilogy™ (EDTA based, pH 8.0) buffer, 15min



For full product information, images and publications, please visit our [website](https://www.genetex.com).