

## DNA Polymerase epsilon p59 antibody

**Cat. No. GTX109069**

|                     |            |
|---------------------|------------|
| <b>Host</b>         | Rabbit     |
| <b>Clonality</b>    | Polyclonal |
| <b>Isotype</b>      | IgG        |
| <b>Applications</b> | Dot        |
| <b>Reactivity</b>   | Human      |

References ( 1 )

Package

100 µl, 25 µl

## Applications

**Application Note**

\*Optimal dilutions/concentrations should be determined by the researcher.

| Suggested dilution | Recommended dilution |
|--------------------|----------------------|
| Dot                | Assay dependent      |

Not tested in other applications.

## Properties

|                      |  |
|----------------------|--|
| <b>Form</b>          | Liquid   |
| <b>Buffer</b>        | 0.1M Tris, 0.1M Glycine, 20% Glycerol  |
| <b>Preservative</b>  | 0.01% Thimerosal   |
| <b>Storage</b>       | Store as concentrated solution. Centrifuge briefly prior to opening vial. For short-term storage (1-2 weeks), store at 4°C. For long-term storage, aliquot and store at -20°C or below. Avoid multiple freeze-thaw cycles. |
| <b>Concentration</b> | 1 mg/ml (Please refer to the vial label for the specific concentration.)   |
| <b>Immunogen</b>     | Recombinant protein encompassing a sequence within the center region of human DNA Polymerase epsilon p59. The exact sequence is proprietary.   |
| <b>Purification</b>  | Purified by antigen-affinity chromatography.   |
| <b>Conjugation</b>   | Unconjugated   |

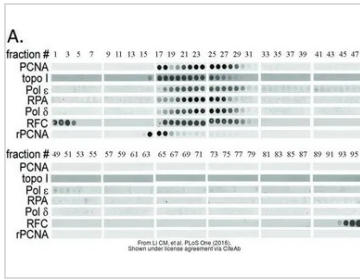
**Note**

For laboratory research use only. Not for any clinical, therapeutic, or diagnostic use in humans or animals. Not for animal or human consumption.

Purchasers shall not, and agree not to enable third parties to, analyze, copy, reverse engineer or otherwise attempt to determine the structure or sequence of the product.

For full product information, images and publications, please visit our [website](#).

DATA IMAGES



GTX109069 Dot Image

The data was published in the journal PLoS One in 2016. [PMID: 28036377](https://pubmed.ncbi.nlm.nih.gov/28036377/)



For full product information, images and publications, please visit our [website](#).