

## 14-3-3 epsilon antibody [N1C3]

Cat. No. GTX109090

Host	Rabbit
Clonality	Polyclonal
Isotype	IgG
Applications	WB, ICC/IF, IHC-P, IP
Reactivity	Human, Mouse

References ( 3 )

Package

100 µl, 25 µl

## Applications

## Application Note

\*Optimal dilutions/concentrations should be determined by the researcher.

Suggested dilution	Recommended dilution
WB	1:1000-1:10000
ICC/IF	1:100-1:1000
IHC-P	1:100-1:1000
IP	1:100-1:500

Not tested in other applications.

Calculated MW 29 kDa. ( [Note](#) )

## Properties

Form	Liquid
Buffer	PBS, 20% Glycerol
Preservative	0.025% ProClin 300
Storage	Store as concentrated solution. Centrifuge briefly prior to opening vial. For short-term storage (1-2 weeks), store at 4°C. For long-term storage, aliquot and store at -20°C or below. Avoid multiple freeze-thaw cycles.
Concentration	1.3 mg/ml (Please refer to the vial label for the specific concentration.)
Immunogen	Full length human 14-3-3 epsilon Recombinant protein.
Purification	Purified by antigen-affinity chromatography.
Conjugation	Unconjugated

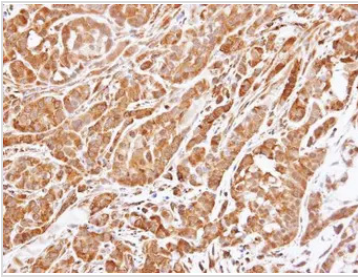
## Note

For laboratory research use only. Not for any clinical, therapeutic, or diagnostic use in humans or animals. Not for animal or human consumption.

Purchasers shall not, and agree not to enable third parties to, analyze, copy, reverse engineer or otherwise attempt to determine the structure or sequence of the product.

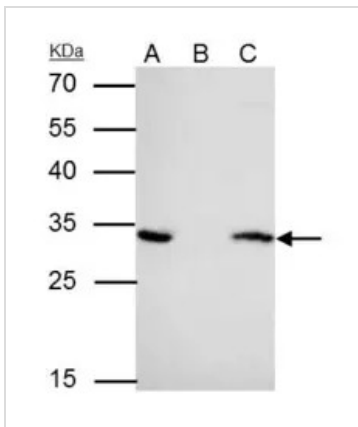


For full product information, images and publications, please visit our [website](#).

**DATA IMAGES**

**GTX109090 IHC-P Image**

Immunohistochemical analysis of paraffin-embedded A549 xenograft , using 14-3-3 epsilon(GTX109090) antibody at 1:500 dilution.

Antigen Retrieval: Trilogy™ (EDTA based, pH 8.0) buffer, 15min


**GTX109090 IP Image**

14-3-3 epsilon antibody [N1C3] immunoprecipitates YWHAE protein in IP experiments.

IP samples: HeLa whole cell extract

A. 40 µg HeLa whole cell extract

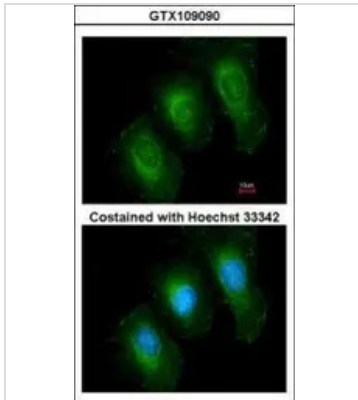
B. Control with 4 µg of preimmune Rabbit IgG

C. Immunoprecipitation of YWHAE protein by 4 µg 14-3-3 epsilon antibody [N1C3] (GTX109090)

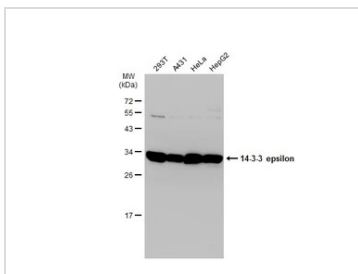
12 % SDS-PAGE

The immunoprecipitated YWHAE protein was detected by 14-3-3 epsilon antibody [N1C3] (GTX109090) diluted at 1:1000.

[EasyBlot anti-rabbit IgG (GTX221666-01) was used as a secondary reagent]


**GTX109090 ICC/IF Image**

Immunofluorescence analysis of methanol-fixed HeLa, using 14-3-3 epsilon(GTX109090) antibody at 1:200 dilution.


**GTX109090 WB Image**

Various whole cell extracts (30 µg) were separated by 12% SDS-PAGE, and the membrane was blotted with 14-3-3 epsilon antibody [N1C3] (GTX109090) diluted at 1:5000. The HRP-conjugated anti-rabbit IgG antibody (GTX213110-01) was used to detect the primary antibody.



For full product information, images and publications, please visit our [website](https://www.genetex.com).