

Human 14-3-3 epsilon protein, His tag

Cat. No. GTX109090-pro
Species Human

Package

100 µg, 25 µg

Properties
Form Liquid

Buffer PBS, 0.1% SDS

Preservative No preservatives

Storage Store as concentrated solution. Centrifuge briefly prior to opening vial. Aliquot and store at -20°C or below. Avoid multiple freeze-thaw cycles.

Concentration Batch dependent (Please refer to the vial label for the specific concentration.)

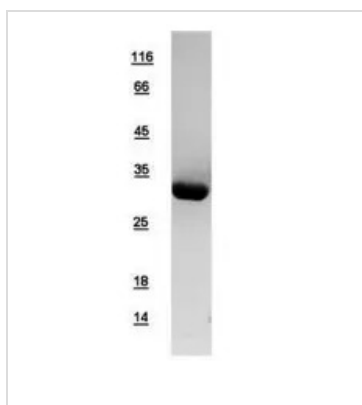
Region/Sequence N-terminal His tagged full length protein of NP_006752

Expression System E. coli

Purity >95%

Conjugation Unconjugated

Note For In vitro laboratory use only. Not for any clinical, therapeutic, or diagnostic use in humans or animals. Not for animal or human consumption.

DATA IMAGES

GTX109090-pro Image

10µg of GTX109090-pro 14-3-3 epsilon recombinant protein analyzed using SDS-PAGE and stained with coomassie blue and captured by black and white camera.


For full product information, images and publications, please visit our [website](#).