

ETHE1 antibody

Cat. No. GTX109095

Host	Rabbit
Clonality	Polyclonal
Isotype	IgG
Applications	WB, ICC/IF, IHC-P
Reactivity	Human, Mouse

References (1)

Package

100 µl, 25 µl

Applications

Application Note

*Optimal dilutions/concentrations should be determined by the researcher.

Suggested dilution	Recommended dilution
WB	1:500-1:10000
ICC/IF	1:100-1:1000
IHC-P	1:100-1:1000

Not tested in other applications.

Calculated MW 28 kDa. ([Note](#))

Properties

Form	Liquid
Buffer	PBS, 1% BSA, 20% Glycerol
Preservative	0.01% Thimerosal
Storage	Store as concentrated solution. Centrifuge briefly prior to opening vial. For short-term storage (1-2 weeks), store at 4°C. For long-term storage, aliquot and store at -20°C or below. Avoid multiple freeze-thaw cycles.
Concentration	1 mg/ml (Please refer to the vial label for the specific concentration.)
Immunogen	Full length human ETHE1 Recombinant protein.
Purification	Purified by antigen-affinity chromatography.
Conjugation	Unconjugated

Note

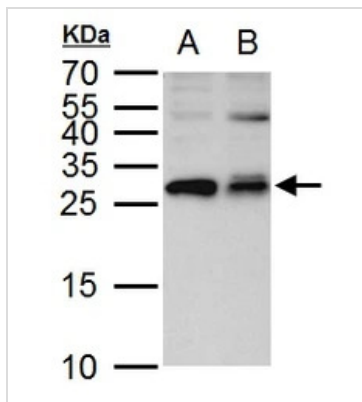
For laboratory research use only. Not for any clinical, therapeutic, or diagnostic use in humans or animals. Not for animal or human consumption.

Purchasers shall not, and agree not to enable third parties to, analyze, copy, reverse engineer or otherwise attempt to determine the structure or sequence of the product.



For full product information, images and publications, please visit our [website](#).

DATA IMAGES



GTX109095 WB Image

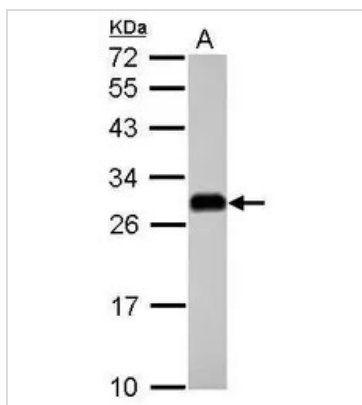
ETHE1 antibody detects ETHE1 protein by western blot analysis.

A. 30 µg Jurkat whole cell lysate/extract

B. 30 µg Raji whole cell lysate/extract

15 % SDS-PAGE

ETHE1 antibody (GTX109095) dilution: 1:500



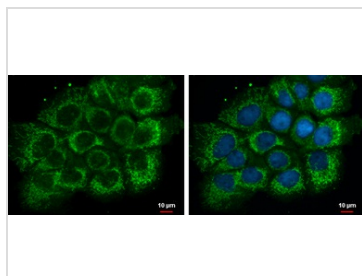
GTX109095 WB Image

Sample (30 ug of whole cell lysate)

A: HepG2

12% SDS PAGE

GTX109095 diluted at 1:5000



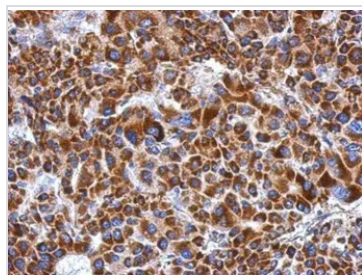
GTX109095 ICC/IF Image

ETHE1 antibody detects ETHE1 protein at mitochondria by immunofluorescent analysis.

Sample: A431 cells were fixed in 2% paraformaldehyde/culture medium at 37°C for 30 min.

Green: ETHE1 protein stained by ETHE1 antibody (GTX109095) diluted at 1:500.

Blue: Hoechst 33342 staining.



GTX109095 IHC-P Image

Immunohistochemical analysis of paraffin-embedded human hepatoma, using ETHE1(GTX109095) antibody at 1:500 dilution.

Antigen Retrieval: Trilogy™ (EDTA based, pH 8.0) buffer, 15min



For full product information, images and publications, please visit our [website](https://www.genetex.com).