

## ID2 antibody [N1C3]

Cat. No. GTX109113

Host	Rabbit
Clonality	Polyclonal
Isotype	IgG
Applications	WB, IHC-P, IHC-Fr
Reactivity	Human, Mouse, Rat

Package  
100 µl, 25 µl

## Applications

## Application Note

\*Optimal dilutions/concentrations should be determined by the researcher.

Suggested dilution	Recommended dilution
WB	1:500-1:3000
IHC-P	1:100-1:1000
IHC-Fr	1:100-1:1000

Not tested in other applications.

Calculated MW 15 kDa. ( [Note](#) )

## Properties

Form	Liquid
Buffer	0.1M Tris, 0.1M Glycine, 10% Glycerol
Preservative	0.01% Thimerosal
Storage	Store as concentrated solution. Centrifuge briefly prior to opening vial. For short-term storage (1-2 weeks), store at 4°C. For long-term storage, aliquot and store at -20°C or below. Avoid multiple freeze-thaw cycles.
Concentration	0.82 mg/ml (Please refer to the vial label for the specific concentration.)
Immunogen	Full length human ID2 Recombinant protein.
Purification	Purified by antigen-affinity chromatography.
Conjugation	Unconjugated

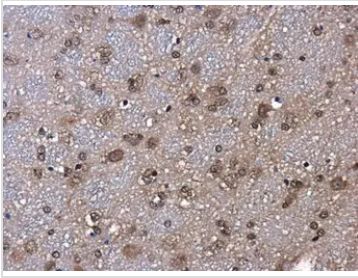
## Note

For laboratory research use only. Not for any clinical, therapeutic, or diagnostic use in humans or animals. Not for animal or human consumption.

Purchasers shall not, and agree not to enable third parties to, analyze, copy, reverse engineer or otherwise attempt to determine the structure or sequence of the product.



For full product information, images and publications, please visit our [website](#).

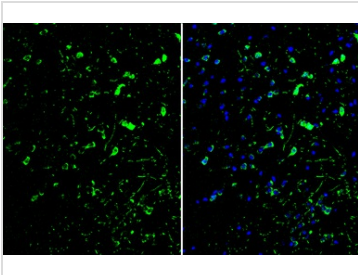
**DATA IMAGES**

**GTX109113 IHC-P Image**

ID2 antibody [N1C3] detects ID2 protein at cytoplasm and nucleus in rat brain by immunohistochemical analysis.

Sample: Paraffin-embedded rat brain.

ID2 antibody [N1C3] (GTX109113) diluted at 1:500.

Antigen Retrieval: Citrate buffer, pH 6.0, 15 min

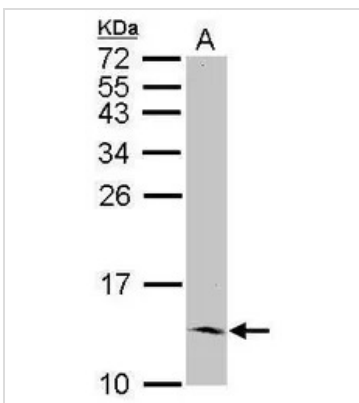

**GTX109113 IHC-Fr Image**

ID2 antibody [N1C3] detects ID2 protein by immunohistochemical analysis.

Sample: Frozen-sectioned mouse cerebral cortex.

Green: ID2 stained by ID2 antibody [N1C3] (GTX109113) diluted at 1:250.

Blue: Fluoroshield with DAPI (GTX30920).


**GTX109113 WB Image**

Sample (30 ug of whole cell lysate)

A: HCT116

15% SDS PAGE

GTX109113 diluted at 1:1000



For full product information, images and publications, please visit our [website](https://www.genetex.com).