

## L-FABP antibody [N1C3]

Cat. No. GTX109142

Host	Rabbit
Clonality	Polyclonal
Isotype	IgG
Applications	WB, IHC-P, IHC-Fr
Reactivity	Human, Mouse, Rat

References ( 5 )

★★★★☆ Review ( 2 )

Package

100 µl, 25 µl

## Applications

## Application Note

\*Optimal dilutions/concentrations should be determined by the researcher.

Suggested dilution	Recommended dilution
WB	1:500-1:3000
IHC-P	1:100-1:1000
IHC-Fr	1:100-1:1000

Not tested in other applications.

Calculated MW 14 kDa. ( [Note](#) )

## Properties

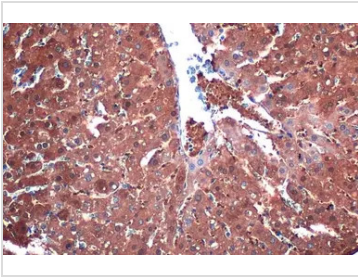
Form	Liquid
Buffer	PBS, 1% BSA, 20% Glycerol
Preservative	0.025% ProClin 300
Storage	Store as concentrated solution. Centrifuge briefly prior to opening vial. For short-term storage (1-2 weeks), store at 4°C. For long-term storage, aliquot and store at -20°C or below. Avoid multiple freeze-thaw cycles.
Concentration	0.39 mg/ml (Please refer to the vial label for the specific concentration.)
Immunogen	Full length human L-FABP Recombinant protein.
Purification	Purified by antigen-affinity chromatography.
Conjugation	Unconjugated

## Note

For laboratory research use only. Not for any clinical, therapeutic, or diagnostic use in humans or animals. Not for animal or human consumption.

Purchasers shall not, and agree not to enable third parties to, analyze, copy, reverse engineer or otherwise attempt to determine the structure or sequence of the product.

For full product information, images and publications, please visit our [website](#).

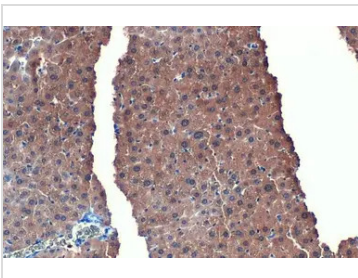
**DATA IMAGES**

**GTX109142 IHC-P Image**

L-FABP antibody [N1C3] detects L-FABP protein at cytoplasm by immunohistochemical analysis.

Sample: Paraffin-embedded rat liver.

L-FABP stained by L-FABP antibody [N1C3] (GTX109142) diluted at 1:500.

Antigen Retrieval: Citrate buffer, pH 6.0, 15 min

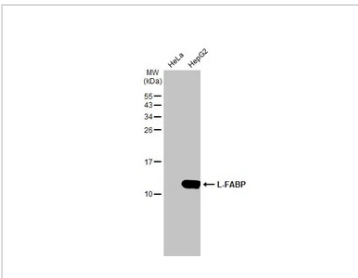

**GTX109142 IHC-P Image**

L-FABP antibody [N1C3] detects L-FABP protein at cytoplasm by immunohistochemical analysis.

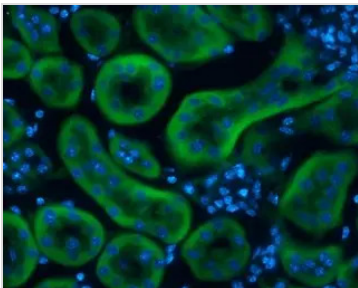
Sample: Paraffin-embedded mouse liver.

L-FABP stained by L-FABP antibody [N1C3] (GTX109142) diluted at 1:500.

Antigen Retrieval: Citrate buffer, pH 6.0, 15 min


**GTX109142 WB Image**

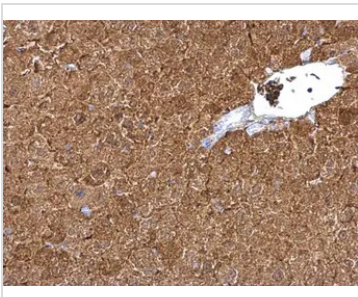
Various whole cell extracts (30 µg) were separated by 15% SDS-PAGE, and the membrane was blotted with L-FABP antibody [N1C3] (GTX109142) diluted at 1:1000. The HRP-conjugated anti-rabbit IgG antibody (GTX213110-01) was used to detect the primary antibody.


**GTX109142 IHC-Fr Image**

L-FABP antibody [N1C3] detects L-FABP protein at cytoplasm in rat kidney by immunohistochemical analysis.

Sample: Frozen section of rat kidney.

L-FABP antibody [N1C3] (GTX109142) diluted at 1:200.


**GTX109142 IHC-P Image**

liver FABP antibody [N1C3] detects liver FABP protein at cytoplasm on mouse liver by immunohistochemical analysis.

Sample: Paraffin-embedded mouse liver.

liver FABP antibody [N1C3] (GTX109142) diluted at 1:500.

Antigen Retrieval: Trilogy™ (EDTA based, pH 8.0) buffer, 15min



For full product information, images and publications, please visit our [website](https://www.genetex.com).